

## ENGINE TOOLS



Jets not included

### BILLET JET STORAGE PLATE

Holds 22 pairs of jets for your Holley carb tuning needs.  
Holds 44 Holley jets (1/4-32 UNF)  
AF98-2011



### BILLET OIL PUMP PRIMER TOOL

The first seconds an engine starts prior to building oil pressure are when damage can easily occur. AeroFlow's Oil Pump Primer lets you spin the oil pump with a 9.52mm (3/8") drill and bring oil pressure prior to firing the engine. AeroFlow's Oil Pump Primer offers a fantastic design. It includes a special billet aluminium sleeve that precisely positions the shaft and keeps it from wobbling.

AF98-2046 Oil Pump Primer for Chevrolet SBC, BBC and V6 90 degree engines

### TOP DEAD CENTRE TOOL

This top dead centre tool provides a positive stop for the piston when locating top dead centre. It screws into the spark plug hole and has a smooth radiused ball end to prevent piston damage.  
AF98-2036

### MAGNETIC DECK BRIDGE

This bridge will fit over bores up to 114.3mm (4-1/2"). This is used to check piston-to-deck clearance, and it is magnetic so it holds firmly into place.  
NOT supplied with dial indicator.  
AF98-2040



### PUSHROD LENGTH CHECKING KIT

AeroFlow's Push Rod Length Checking tool makes it easy and cost-effective to lay out and establish the proper pushrod length during an engine rebuild. Correct pushrod length is critical in achieving proper valve train geometry. They are made from a 5/16"(8mm) pushrod that is cut and threaded with over 1"(25.4mm) travel. The kit contains 5 individual length checkers and diameter checker.

AF98-2050 Push Rod Length Checking Kit  
Kit includes all sizes. Also available individually.  
AF98-2050-1 From 6.125" (155mm) to 7.500" (190mm)  
AF98-2050-2 From 7.500" (190mm) to 8.700" (220mm)  
AF98-2050-3 From 8.500" (215mm) to 9.800" (248mm)  
AF98-2050-4 From 9.700" (246mm) to 11.00" (279mm)  
AF98-2050-5 From 10.20" (259mm) to 11.50" (292mm)



### UNIVERSAL OIL FILTER CUTTER

Want to see the contaminants that your oil filter has prevented from destroying your engine? That's now easier than before with the AeroFlow oil filter cutters to cut your filter so you can scrutinize the particles confined inside. Much like a hand held tubing cutter, they use a cutting wheel and a pair of opposing ball bearings to easily rotate the filters as they cut. Made from aluminium to guarantee ease of use and durability.

Part No Description  
AF98-2047 Universal Oil Filter Cutter  
AF59-2047 Replacement cutting blades (2 pack)



### Piston Rack

Holds a full set of 8 pistons with rods.  
Piston Rack RCD45307-01



### Tapered Ring Compressors

ARP's new ring compressors are CNC machined from 6061-T6 billet tube material and feature a true radius for each different bore diameter. What's more, they are relieved for wire O-rings on bottom. Type 3 anodizing is used for long life, and the bore size is prominently engraved in 3/4" high numbers for easy identification. Standard stocking sizes from 4" to 4.65" (SAE) and 75mm to 95.5mm (metric). The true radius design is far superior to conventional "tapered" devices, and widely acclaimed by professional engine builders! This is truly the very best piston ring compressor on the market today.

Size	Part No.
3.900	AR899-9000
4.000	AR900-0000
4.020	AR900-0200
4.030	AR900-0300
4.040	AR900-0400
4.060	AR900-0600
4.125	AR900-1250
4.155	AR900-1550
4.185	AR900-1850
4.187	AR900-1870
4.250	AR900-2500
4.280	AR900-2800
4.310	AR900-3100
4.375	AR900-3750
4.390	AR900-3900
4.440	AR900-4400
4.470	AR900-4700
4.500	AR900-5000
4.530	AR900-5300
4.560	AR900-5600
4.600	AR900-6000
4.625	AR900-6250



Size	Part No.
85.50mm	AR901-8550
86.00mm	AR901-8600
86.50mm	AR901-8650
87.00mm	AR901-8700
87.50mm	AR901-8750
92.00mm	AR901-9200
92.50mm	AR901-9250
93.00mm	AR901-9300
93.50mm	AR901-9350
94.00mm	AR901-9400
94.50mm	AR901-9450
95.00mm	AR901-9500
95.50mm	AR901-9550

### Rod Bolt Stretch Gauge

We highly recommend using a stretch gauge when installing rod bolts and other fasteners where it is possible to measure the length of the bolt after tightening. It is the most accurate way to determine the correct pre-load in the rod bolt. Measure the fastener prior to starting, and monitor overall length during installation. When the bolt has stretched the specified amount, the correct preload, or torque, has been applied.

We recommend you maintain a chart of all rod bolts, and copy down the length of the fastener prior to and after installation. If there is a permanent increase of .001" in length or more, or if there is deformation, the bolt should be replaced immediately. Don't chance it! ARP offers a highly accurate stretch gauge with a dial indicator that reads in increments of .0005". Features extra heavy springs for consistent repetition. Comes with a heavy-duty, insulated plastic carrying case for protection. A "must" for any serious engine builder.

Product Part #  
Stretch Gauge, billet-style AR100-9942



### Oil Pump Primer Kit

Those first moments an engine runs prior to building oil pressure are when damage can easily occur. ARP's Oil Pump Primer Kit lets you spin the oil pump with a drill motor and bring up the oil pressure prior to starting the engine. This prevents any unnecessary wear or damage to rotating, reciprocating and valve train components. ARP's rugged primer shaft is rated at 170,000 psi to ensure extended service life of this valuable tool and features a special billet aluminium sleeve that prevents it from wobbling.

Chev Small & Big Block Engines AR130-8802



### Chevy Oil Pump Primer

Inserts into distributor hole to prime the engine with oil prior to initial start up. Fits Chevy Small Block and Big Block engines.

Chevrolet Oil Pump Primer RPCR9534



### Oil Pump Primer

Engine Pre-lube Primer Ford SBF 1/4"  
• Allows the oil pump to be primed and the engine prelubed prior to initial start-up  
• Eliminates the chance of a "dry start" and premature engine damage  
• Primers drop in place of distributor and, with the use of a drill, spin the oil pump to supply oil to critical engine components  
• Features a top alignment collar and Chevrolet model includes a bushing to pressurize the upper valve train  
C04922

### Oil Pump Primers: Pro-Ford 302-351C&M & 400-460 (5/16" Hex Drive)

- Features a non-slip, triangular drive tip for attaching a drill
- Black oxide coating for extra durability
- Pro-models have a top alignment collar
- Chevy tool also includes bushing to pressurize the upper valve train
- Allows oil pump to be primed & engine pre-lubed prior to install start-up
- Eliminates chance of "dry start" & premature engine damage  
POW101160

### OIL PUMP PRIMER

Before starting a new motor, proper priming of the system is absolutely critical. These oil pump primers prohibit needless engine wear from improper lubrication upon initial start-up. These primers allow you to drive the oil pump with a 3/8" drill once the distributor is removed. Primer shaft are black oxide finished.

SB & BB Chrysler Oil Pump Primer MI23015



### Connecting Rod Bolt Boots

These bolt boots protect journal surfaces during engine assembly, preventing Crankshaft damage. Shipped with 2 per bag.  
Conrod Bolt Boots CL2800B1



### Isky Groov-O-Matic

#### Cylinder Block O-Ringing Tool

You will discover this tool to be both an exceptional time-saver and money-maker. The amazing versatility of the "ISKY" Groov-O-Matic permits Block O-Ring grooving to be done anywhere, in the shop or in the field, in only a matter of minutes. The tool pilots in the cylinder bore & is easily adjustable for bore diameter. Also adjustable for both diameter and depth of cut for the copper O-ring groove. This tool will undoubtedly become standard equipment for every efficiently run speed shop. (Copper wire and complete instructions furnished with tool).

- Groov-O-Matic is the fast and profitable way to "O-Ring" the cylinder block face.
- Groov-O-Matic alleviates blown head gaskets on supercharged, turbocharged or hi-compression engines.

Mini Groov-O-Matic for 3-1/8" to 3-3/4" Cylinder Bores ISK-100-GRM  
Maxi Groov-O-Matic for 3-3/4" to 4-3/8" Cylinder Bores ISK-200-GRM  
Replacement Cobalt Cutting Blade (each) ISK-GRM-CUTTER

### Oil Pressure Test Kit

An inexpensive way of testing bypass pressure on most GM, Ford and Chrysler V8 oil pumps.

Oil Pressure Test Kit CVRPT01



### Top Dead Centre Stop

You need to have one of these when degreasing in any camshaft. They're designed to positively stop the piston in order to find top dead centre. The universal plate type bolts across any cylinder bore when the heads are off.  
Top Dead Centre Stop POW101335



### Harmonic Balancer Puller/Installer

This tool features a hardened, threaded shaft and alloy nut, combined with a roller thrust bearing puller plate. The kit fits GM, Ford and Chrysler and includes various size puller bolts. A plastic storage box is included.  
Harmonic Balancer Puller/Installer POW300000

POW300000



## Deck Bridges

We offer two versions of our popular Deck Bridge to check piston dome height and deck clearance while assembling an engine. Both have a 4 3/4" span and three holes for dial indicator position. The standard model is held in place by good old gravity and the pro model has super strong magnets in each leg to attach it firmly to the deck surface. As an added feature, the pro model holds dial calipers in an upright position to measure crankshaft stroke..

**Standard Deck Bridge**

**POW101310**

**Pro Deck Bridge - Magnetic**

**POW101315**

## Piston Ring Expander Pliers

Here's a universal tool that handles piston rings of all sizes, from lawn mowers to 5.00" bore mountain motors. Rings can be removed or installed on the piston without fear of breakage from the unnatural twisting that occurs when using just your hands. Our Piston Ring Expander Pliers are even heat-treated for long life and durability.

**Piston Ring Expander Pliers**

**POW105060**

## Peg Style Head Holders

Our Peg-Style Head Holders are a great, low-cost way to suspend your cylinder heads above your workbench when performing port and polish work. The tapered pins slide into the cylinder head bolt holes so you can hold the head right-side up or upside down.

**Peg Style Head Holders**

**POW351410**

## Cylinder Head CC Kits

Our kits provide everything you need to properly cc cylinder head combustion chambers, intake and exhaust runners, intake manifolds, or cylinders. Our precision glass burets are compatible with alcohol, parts washer fluid or anything else you would want to put in them. Our easy-to-read scales are clearly marked and actually read out the amount you've poured, so there's no math involved. Kits contain a precision glass buret with integral petcock, a stand and clamp assembly, a flat plexiglass plate to cover the combustion chamber and instructions on how to properly cc cylinder heads.

**Description**

**Part No.**

**Cylinder Head CC Kit - 100cc x 0.2cc**

**POW351150**

**Cylinder Head CC Kit - 250cc x 1.0cc**

**POW351160**

## Harmonic Balancer

### Installation Tool

This tool uses a pilot stud, which keeps the harmonic balancer perpendicular to the crankshaft's centerline for a bind-free installation. Thrust bearing and protective washer allows the drive nut to rotate freely so the balancer is pressed on smoothly and evenly. Includes 7/16", 1/2", 5/8" and 3/4" adapters to fit most popular engines including Chevrolet, Ford, Holden, Mopar, KB Hemi, Pontiac, Oldsmobile and Buick.

**Harmonic Balancer Installation Tool**

**MO61744**

## Pushrod Cleaning Brush

COMP Cams® is pleased to introduce our New Pushrod Cleaning Brush. This new brush is perfect for cleaning the inside of pushrods that oil through the centre. This brush is the answer for thoroughly cleaning push rods. The brush is 12 inches long and features nylon bristles and steel shaft

**C07700**

## Engine Cleaning Brushes

It's important to have a clean block - especially in critical hard-to-get-at areas of the oiling system. Each brush is designed for a specific purpose; there are two each of the oil gallery brushes since they get the most wear. Can also be used on crankshaft oil holes, cylinder heads, etc; bristles are made of nylon which cleans as well as wire but does not scratch. Full engine set of 12 brushes from 1/4" to 5" diameter.

**Engine Cleaning Brushes**

**MO61820**

## Oil Pump Primers

The only correct way to build up oil pressure in a new engine before initial starting. Remove the distributor and insert the primer to engage the end of the oil pump drive. The other end of the primer fits a 3/8" chuck in a hand drill to drive the oil pump. Black oxide finish resists corrosion.

**Chevrolet Small & Big Block**

**MO62200**

**Ford 289, 302, 390, 428 (1/4" Hex)**

**MO62210**

**Ford 351W, 351C, 400, 429, 460 (5/16" Hex)**

**MO62220**

**Chrysler Small & Big Block**

**MO62250**

## Engine Storage Bag

- Manufactured from heavy 4 mil thick plastic
- Extra-large size covers a complete engine including most headers
- Dimensions M099400: 40" wide x 19-1/2" deep x 47" tall
- Dimensions M099401: 42" wide x 32" deep x 54" tall, even covers Roots Blown Hemi and other super displacement engines
- One per package

**Description**

**Engine Storage Bag**

**Extra Large Engine Storage Bag**

**Part No.**

**M099400**

**M099401**

## Dial Indicator Stand

Rugged fixture is a "must have" for the serious engine builder. The versatile stand will span cylinder bores up to 4-7/16", and makes it easy to check piston dome and deck heights. Block and head surface problems can be found by the racer who checks everything. Other uses include checking for flatness, runout, warping, etc.

**Dial Indicator Stand**

**MO62050**

## Cylinder Leakage Tester

Quickly diagnoses failed or leaking valves, pistons, rings, and head gaskets. Large-diameter 3-1/2" gauge face indicates percentage of leakage rather than psi, eliminating need for math calculations. Includes 4-foot hose with quick-disconnect fitting and two zinc-plated adapters for 14mm and 18mm plug sizes

**Cylinder Leakage Tester**

**OHC ADAPTER, 7.43" LONG**

**Replacement Gauge Only (SUIT M089600)**

## Dual Gauge Leakdown Tester

Racers prefer the dual gauge design of our Leakdown Tester to check for problems with piston rings, valves, head gaskets, etc. The left hand gauge shows incoming air pressure, while the right hand gauge (once plugged into the cylinder being checked) shows how much air the cylinder is holding. The difference between the two gauges is your leakdown. A universal 14mm spark plug adapter, rubber gauge protectors, high-quality regulator and complete instructions are all standard with our precision Leakdown Tester

**POW301018**

**MR. GASKET CO.**

## Universal Degree Wheel

The seven-inch diameter Degree Wheel is designed to insure maximum accuracy in camshaft installations. All necessary instructions are etched into the easy-to-read, anodized face, and it comes with two adapters for a universal fit on all engines.

**Universal 7" Degree Wheel**

**MG1570**

## Pro Degree Wheel

This 11-inch diameter Degree Wheel has color-coded scales for instant read-outs. Made of sturdy aluminium and designed to read the same as the camshaft spec card reads, it is precision degreed for accurate readings. The exhaust and intake centreline areas are also indicated and color coded. Claimed to be the best wheel on the market, it also fits many blowers. Universal design fits 7/16", 1/2", 5/8" and 3/4" crankshaft bolts.

**Universal 11" Degree Wheel**

**MG6120**

## Engine Port Polishing Kit

Mr. Gasket's Port Polishing Kit is designed for use on cast iron and aluminium components. This kit allows you to do your own detailed porting, polishing, and removal of flashing on all engine parts with the use of an electric drill.

**The kit contains:**

- (1) Tapered Cutting Stone
- (1) 1" Diameter Mini Grind-flex Flat Wheel
- (29) Grind-Polishing Rolls (Assorted Sizes)
- (3) Various Length Mandrels.

**Engine Port Polishing Kit**

**MG4362**

## Engine Cleaning Brush Kits

Serious engine builders and backyard mechanics alike need these special length brushes to properly clean all the holes and passages found in most automotive engines. Available in a wide variety of diameters and lengths, each brush is made from pure stiff bristle nylon that won't soften or melt when used in conjunction with most engine cleaning solvents. The short brush kit includes one each of 5/16", 1/2" and 5/8" O.D. x 9" overall length brushes and the complete set contains nine (9) assorted brushes ranging from 1/4" to 5" diameter.

**Short Brush Kit**

**MG1211**

**Brush Kit, Complete Set**

**MG5192**



**MGLSTC1**

**MGLSTC2**

**MGLSRC1**

## GM LS Timing/Rear Cover Alignment Tool

The timing cover and rear cover on GM LS series engines don't have any dowel pins to ensure correct alignment to the centreline of the crankshaft & this often leads to annoying leaks at the front damper seal and rear main seal. These special alignment tools center the front or rear cover when it is installed, and allow an easy way to install the seal (by lightly tapping on the tool with rubber mallet). Choose from (3) styles of these alignment tools. Plastic construction with O-rings. Made in the USA

**Application**

**Part No.**

**GM LS Rear Cover Alignment Tool -**

**MGLSRC1**

**Use without Rear Seal in Cover**

**GM LS Timing Cover Alignment Tool -**

**MGLSTC1**

**Use without Front Seal in Cover**

**GM LS Timing Cover Alignment Tool -**

**MGLSTC2**

**Use with Front Seal in Cover**



## Piston Ring Squaring Tool

Get your piston rings aligned the first time. Just simply press piston rings down for perfect depth every time.

**Piston Ring Squaring Tool**

**PR67652**

## Adjustable Ring Compressor

Putting the connecting rod through first, simply place the piston (with rings) into the tapered end of the ring compressor. Tighten the compressor snugly around the base of the piston. Then lay the compressor flat on the engine cylinder bore.

**4.000" - 4.090" Blue**

**PR66766**

**4.125" - 4.205" Gold**

**PR66767**

**4.205" - 4.310" Red**

**PR66768**

## Tapered Ring Compressors

The PROFORM tapered ring compressor is an affordable and easy way to install your pistons! By creating a slight squeeze on the piston ring the compressor eases the piston into the cylinder bore. Manufactured for engine blocks with studs.

**Tapered Ring Compressor 4.030**

**PR67445**

**Tapered Ring Compressor 4.000**

**PR67448**

**Tapered Ring Compressor 4.040**

**PR67449**

**Tapered Ring Compressor 4.060**

**PR67450**

**Tapered Ring Compressor 4.125**

**PR67451**

**Tapered Ring Compressor 4.155**

**PR67452**

**Tapered Ring Compressor 4.250**

**PR67572**

**Tapered Ring Compressor 4.280**

**PR67573**

**Tapered Ring Compressor 4.310**

**PR67574**

## Powerhouse Tapered Ring Compressor

The absolute best and easiest way to install pistons into the cylinder bore is with one of our Tapered Ring Compressors. These tools gently squeeze the rings and funnel the piston into the bore without ring damage or breakage.

- Extra tall aluminium ring compressors are hard anodized for long life

- Designed to work on blocks with studs, they also feature a handy finger registration groove
- Available in all popular sizes

**4.000" Tapered Ring Compressor**

**POW104000**

**4.005" Tapered Ring Compressor**

**POW104005**

**4.020" Tapered Ring Compressor**

**POW104020**

**4.030" Tapered Ring Compressor**

**POW104030**

**4.040" Tapered Ring Compressor**

**POW104040**

**4.060" Tapered Ring Compressor**

**POW104060**

## Universal Ring Installation Tool

This stainless steel tool makes installing pistons easy. Putting the connecting rod through first, simply place the piston (with rings) into the tapered end of the ring compressor. Tighten the compressor snugly around the base of the piston.

Then lay the compressor flat on the engine cylinder bore.

**Universal Ring Installation Tool**

**PR67655**





### Manual Piston Ring Filer

To assure proper piston ring end-gap, the piston ring filer enables the user to file piston rings quickly and accurately. Position the piston ring firmly against the dowel pins, crank the handle to turn the abrasive wheel. Using a feeler gauge, file the piston ring to meet the manufacturer's specification. **Ring Filer, Manual** PR66785  
**Replacement 120-Grit Grinding Wheel** PR66786



### ELECTRIC PISTON RING FILER

This easy to use electric ring filer makes quick and precise work of ring grinding. Square up your ring by simply pressing it against the dowel pins for a clean grind. 120V or 240V adapters give this ring filer enough juice to get the job done wherever you are in the world.

- Comes with One 120 Grit Grinding Wheel
- Made from High-Quality Aluminium
- Uses Proform Part #PR66786 Replacement Grinding Wheels
- Can Be Bench or Vice Mounted

**240 Volt Piston Ring Filer** PR66759

### Electric Piston Ring Filer

Accurately set end gap with PROFORM's powerful electric ring filing tool. Powered by a 12 volt, rechargeable battery. Offers maximum speed and affordability. Comes with two (2) 120-grit grinding wheels (p/n 66762) and battery recharger. Portable or can be bench mounted.

**Supplied with US style 110 volt charger. Optional 240 volt charger is required for Australian power outlets. Which ROCKET stock Part No is 5RMP3130**  
**Piston Ring Filer, Electric** PR66765  
**Replacement 120-Grit Grinding Wheel** PR66762  
**240V Battery Charger** 5RMP-3130  
**Replacement Battery** PR91-BAT



### Powerhouse® Electric Powered Ring Filer

The Powerhouse® Products Electric Powered Ring Filer puts an end to tedious filing and constant rechecking to get perfectly matched gaps. Featuring a 3" grinding wheel for fast, accurate cuts, simply grind the first ring and then complete the rest with the exact same setup to ensure consistency between all parts. Grind 1 to 8 ring gaps within .001". Simply switch the motor on and a quick push down on the table cuts a square ring every time. A knurled in-feed adjustment knob offers extra control and a dial indicator means a super accurate cut the first and last time. With a fine adjustment feed screw and capabilities for ring diameters from 2.5" to 5.0", the grinder also includes a de-burring wheel to knock off the sharp edges created when grinding. The powerful, high torque motor won't stall and there is never a need to replace batteries.

- Powerful AC motor makes grinding a snap; a quick push down on the table cuts a square ring every time
- Large 3" grinding wheel allows for fast, accurate cuts
- Grinds 1 to 8 ring gaps within .001"
- Knurled in-feed adjustment knob offers extra control
- Included de-burring wheel conveniently knocks off the sharp edges created when grinding

**POW105045**



### Heavy-Duty Ring Groove Cleaner

Remove carbon from ring grooves on pistons from 2" to 5" diameter with our heavy-duty Ring Groove Cleaner. We like this tool because the hardened cutter wheel includes all twelve of the most popular ring sizes: 3/16", 5/32", 1/8", 3/32", 5/64", 1/16", 1/4", 4.5mm, 4.0mm, 3.0mm, 2.5mm and 2.0mm.

**POW105065**



### Professional Dial Bore Gauge

Easily determine the dimensions of your rod and cylinder bores with our Professional Dial Bore Gauge. This unit features a 2" - 6" range with extendable handle and comes in a durable carrying case. **Dial Bore Gauge 2" - 6"/.0005"**



PR67411

### Rod Bolt Stretch Gauge

.0001 Dial indicator. Check rod bolts the proper way, because sometimes torque readings may vary. Using the stretch factors supplied by rod bolt manufacturers, this stretch gauge offers a highly accurate way to measure torque pre-load. With a special, high-tension spring, this gauge remains conveniently positioned on the bolt during tightening, with adjustability for bolts up to 2.75" long. Simply position the stretch gauge over the length of the rod bolt before applying torque, take a reading, and record it. Then torque down to the proper torque setting, and take another reading with the stretch gauge. Calculate the difference and check the manufacturer's specification.

**Rod Bolt Stretch Gauge**



PR66788

### Universal Dial Indicator

Universal Dial Indicator, graduation: 0.001".  
**Dial Indicator 0 to 1.000"** PR66962  
**Dial Indicator 0 to 0.250"** PR66963



### Dial Indicator Magnetic Base

Engine building work requires a dial indicator, but precise engine building work demands a dial indicator magnetic base. This PROFORM tool will hold your dial indicator in nearly any position. The magnetic base has 100 lbs of pull and comes with an easy on/off switch for portability.

**Dial Indicator Magnetic Base** PR67425

### Magnetic Deck Bridge

This will go over cylinder bores up to 4-1/2". This is used to check piston-to-deck clearance, and it is magnetic so it holds firmly in place. Dial Indicator PR66962 is sold separately.

**Magnetic Deck Bridge**



PR66797

### Micrometre Sets

PROFORM heavy-duty micrometre sets for all the popular applications and finally affordable for the weekend racer. PROFORM micrometres feature quick-lock levers, ratchet stops, carbide measuring tips, calibration accessories, adjuster wrenches, and each PROFORM micrometre comes in a handy and durable carrying case.

**Micrometre Set 0" - 3"/.0001"** PR67436  
**Micrometre Set 0" - 4"/.0001"** PR67437  
**Micrometre Set 04" - 6"/.0001"** PR67438



PR67432



PR67434

### OUTSIDE MICROMETER

PROFORM heavy-duty micrometer sets for all the popular applications and finally affordable for the weekend racer. PROFORM micrometers feature quick-lock levers, ratchet stops, carbide measuring tips, calibration accessories, adjuster wrenches, and each PROFORM micrometer comes in a handy and durable carrying case.

**Individual Micrometer 2"-3"/.0001"** PR67432  
**Individual Micrometer 4"-5"/.0001"** PR67434

### 6 pc Telescoping Gauge Set

Quickly measure everything from diameter to grooves to hard to reach recesses with the PROFORM Telescoping Gauge Set. Simply insert the gauge (six sizes to choose from) into the area and turn the knob. The spring-fed arms will snap to outereges. Now, tighten the knob to lock the inside measurement. Comes with six gauges ranging from 5/16" to 6" and a durable carrying case.

**6 PC Telescoping Gauge Set**



PR67412

### Top Dead Centre Locator

This tool provides a positive stop for the piston when locating top dead centre. It screws into the spark plug hole.

**Chrysler TDC Locator**



PR67581

### Deck Bridge

Easily checks top dead centre by bolting down across cylinder bore. (Used w/ heads off)

**Deck Bridge**



PR66799

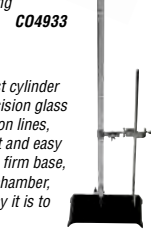
### COMP Cams Top Dead Centre Tools

These COMP Cams tools are designed to stop the piston in order to find top dead centre. They mount on to the top of the engine block and thread into the existing head bolt holes.

### Cylinder Head CC Kit

This is the kit you need to accurately cc most cylinder head combustion chambers. Includes a precision glass 100cc burette with easy-to-read 0.2cc division lines, an integral petcock for precise measurement and easy flow-control, a burette clamp, a stand with a firm base, a flat acrylic plate to cover the combustion chamber, and detailed instructions explaining how easy it is to professionally cc cylinder heads.

**Cyl. Head CC Kit (100x.2cc)**  
**Replacement Burette Tube ONLY**



PR66831

PR66831-TUBE

### Piston Dome Thickness Checker

Who would dare to modify piston domes or to fly-cut valve pockets without knowing how much material there is to work with? This simple tool includes a .0001" dial indicator and a contact point that permits measurement of the most complex dome shapes. An essential tool for every well-equipped machine shop.

**Piston Dome Thickness Checker**

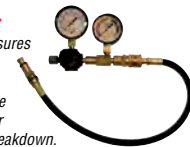
PR66833



### Dual-Gauge Leakdown Tester

This dual-gauge leakdown tester measures the condition of your head gaskets, piston rings, and valves. The gauge records incoming air pressure, and the right gauge records individual cylinder pressure - and the difference is your leakdown.

**Dual-Gauge Leakdown Tester**



PR66839

### Digital Engine Balancing Scale

These precision scales are perfect for balancing pistons, rods, clutch weights, etc. Digital models are powered by one 9-volt battery or an optional AC adapter. Use with Connecting Rod Balancer, P/N PR66844.  
**Digital Scale 3000G x 1G**  
**Digital Scale 2000G x 0.1G**  
**Optional 240V AC Adapter**



PR66467

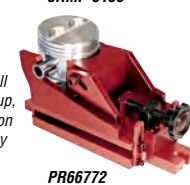
PR66473

5RMP-3130

### Heavy-Duty Multiple Angle Piston Vise

Finally an affordable piston vise with all the best features including; quick set-up, repeatability, billet aluminium, corrosion resistant anodizing, universal, and easy to use. Up to 4.6" diameter pistons.

**Heavy-Duty Adjustable Piston Vise**

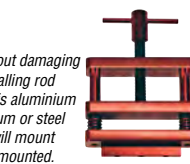


PR66772

### Connecting Rod Vise

Holding connecting rods securely without damaging them is necessary for removing or installing rod bolts, beam polishing or machining. This aluminium vise is designed for all sizes of aluminium or steel rods, and can hold several at once. It will mount in a bench vise or can be permanently mounted.

**Connecting Rod Vise**



PR66769

### Heavy-Duty Rod Splitting Fixture

Let's face it, connecting rods rarely come apart easily. That is until now. Quickly separate the cap from the rod without damage using PROFORM's new Heavy-Duty Rod Splitting Tool. Simply loosen the rod nuts a couple of turns, place the rod onto the splitting fixture, and pull the handle. Portable, for use with your bench top vise.

**Rod Splitting Fixture**



PR66773

### Handheld Rod Splitting Tool

Easily separate your connecting rod caps with this non-marring hand-held splitter. Just turn the handle and the unit opens up so the 4 non-marring ends push the cap apart.

**Handheld Rod Splitting Tool**

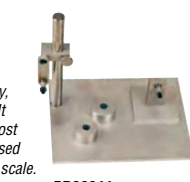


PR67905

### Connecting Rod Balancer

This fixture holds each end of the connecting rod on the scale separately, for weighing the big and small ends. It comes with two mandrels to cover most popular engines, and it is ordinarily used with a digital or mechanical weighing scale.

**Rod Balancer**

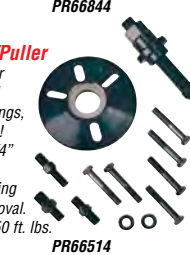


PR66844

### Harmonic Balancer Installer/Puller

Works with all Ford, GM, and Chrysler engines. This heavy-duty, professional tool, equipped with roller thrust bearings, can also be used as a universal puller! Includes 7/16" - 20, 5/8" x 18, and 3/4" x 16 adapters and various removal hardware. May also be used for steering wheel and pulley installation and removal. Maximum recommended torque is 150 ft. lbs.

**Harmonic Balancer Installer/Puller**



PR66514

### Heavy-Duty Piston Installation Tool

The PROFORM piston installation tool features nylon-composite construction so you can knock away all night without any damage to your expensive pistons! This affordable tool weighs just under 2 pounds, features steel-shot filled chamber, and an easy-grip handle.

**Piston Installation Tool**



PR67571

### Heavy-Duty Aluminium Head Holders, V-Style

Modify and maintain your cylinder heads with ease with the heavy-duty aluminium head holders. Sold in pairs.

**Heavy-Duty Aluminium Head Holders**



PR66481

### Cylinder Head Work Stands, Adjustable

Our heavy-duty cylinder head work stand is great way to hold your cylinder heads above your workbench while working on them. The adjustable arms allow you to set the proper height and maintain stability.

**Cylinder Head Work Stand**



PR66483



## VALVE TRAIN TOOLS

### FORD OIL PUMP PRIMER

This engine oil pump primer comes complete with the aluminium guide. Designed to fit Ford V8 engines. The tool primes the oil pump directly through the distributor hole, for use with a 3/8 inch chuck drill, a must have product for all engine builders. Sold individually.

#### Description

SB Ford 289-302 Windsor 1/4" Hex  
Ford 302-351 Cleveland 5/16" Hex  
BB Ford 429-460 5/16" Hex

Part No.  
PR67566  
PR67567  
PR67567



### GM LS SERIES HARMONIC BALANCER

#### INSTALLATION TOOL

This tool makes installing the harmonic balancer simple; just thread the proper end into the crankshaft, and then rotate the elongate nut which presses the bearing against the balancer which will slide onto the crankshaft smoothly.

PR66519

### Chevy B/B Oil Pump Pick-Up Driver Tool

No more banged up oil pickups and punctured tubes. Easily installs oil pickup tube. For Chevy big block engines.

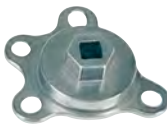
Chevy B/B Oil Pump Pick-Up Driver Tool PR66480



### Engine Rotation Adapter

For Chevy or Ford V8 engines. Easily attaches to the balancer. Useful when assembling an engine or degreasing the cam. Then the crankshaft can be rotated with a 1/2" breaker bar or a 1" socket and breaker bar.

Rotation Adapter



PR66782

### Crank Shaft Turning Socket

Engine work requires repeated crankshaft rotation. This non marring, aluminium tool rotates the crankshaft the proper way, when the balancer is off. Making sure to have the proper size, position this socket over the end of the crankshaft, so it can be turned using a 1/2" breaker bar or drive ratchet.

Chevy B/B (1.610" ID)  
Ford S/B and Pontiac (1.385" ID)  
Chevy S/B & V6 (1.255" ID)

PR66899  
PR66900  
PR66901



### Crankshaft Turning Nuts

These heavy-duty PROFORM Crankshaft Turning Nuts are a MUST HAVE for the engine builders' tool box. Rotating the crankshaft during assembly is now an easy task with these steel crankshaft nuts for Chevy Small Block and Holden V8s.

Chevy SB & Holden Crankshaft Nut PR67440



### Flywheel/Flexplate Turning Tool

The new PROFORM spring-loaded universal flywheel tool makes manually turning your flywheel a snap.

Flywheel Turning Tool PR67462

### Engine Block Off Kits

These handy kits include plates to block off the carburettor, exhaust, water pump, fuel pump, water outlet and distributor flanges to prevent dust entering the engine during storage or transportation.



#### Application

Chevy Small Block with Holley 2300 2-Barrel JAZ730-006-01  
Chevy Small Block with Holley 4150 4-Barrel JAZ730-001-01  
Chevy Big Block with Holley 4150 4-Barrel JAZ730-002-01  
Chevy Big Block with Holley 4500 4-Barrel JAZ730-003-01  
Ford Windsor with Holley 2300 2-Barrel JAZ730-008-01  
Ford Windsor with Holley 4150 4-Barrel JAZ730-007-01

Part No.  
JAZ730-006-01  
JAZ730-001-01  
JAZ730-002-01  
JAZ730-003-01  
JAZ730-008-01  
JAZ730-007-01

### Intake Port Gauge

This convenient gauge can be used to identify cylinder intake head port dimensions and reference the correct Mr. Gasket intake gasket to be used for installation.

There are 19 Chevy Small Block and 9 Big Block Intake templates.

Intake Manifold Port Gauge

MG73074G



### Push Rod Length Checker

For Chevy small block and big block engines. Proper push rod length is absolutely critical for peak performance - minimizing bent or broken valve stems, guide wear, and energy-wasting valve side-loading friction.

Chevy Small Block with 3/8" studs  
Chevy Small Block with 7/16" studs  
Chevy Big Block with 7/16" studs

PR66789  
PR66790  
PR66806



### Head Off Checking Fixture

If you've ever had to wrestle with a magnetic base and a dial indicator to measure cam lift, you will really appreciate this tool. We designed this fixture to maintain proper geometry while holding a dial indicator (not included) and 5" extension (included) precisely over the lifters. Since it comes with both 1/2" and 7/16" adapters, you can easily attach it to any engine block.

Head Off Checking Fixture



POW101520

### Heavy Duty Valve Spring Compressor

Our super-duty spring compressor is constructed of a welded steel, box-tubing frame and an over-centre type clamping device that can compress any valve spring. The compressor arm slides up and down for adjustment and utilizes a locking pin for speed and ease of use.

Heavy Duty Valve Spring Compressor

POW351015



### Valve Seal Installer

Our new CNC machined aluminium Valve Seal Installer makes installing PC seals a breeze. This tool works with .500" and .531" PC seals and prevents seal distortion or gouging during installation. Anodized for durability.

Valve Seal Installer

POW351395



### COMP Cams Master Magnum Checking Pushrods

These tools from COMP Cams make it easy and economical to lay out and determine the proper pushrod length for a high performance engine. This is necessary for correct valvetrain geometry, so you can obtain the desired results from the cam and ensure that damage is not done to the rest of the valvetrain.

Kit 6.125 in. to 11.500 Ball Ends C07900  
Adjustment Range 7.500 in. to 8.700 in. Ball Ends C07901-1  
Adjustment Range 8.500 in. to 9.800 in. Ball Ends C07902-1  
Adjustment Range 9.700 in. to 11.00 in. Ball Ends C07903-1  
Adjustment Range 6.125 in. to 7.500 in. Ball Ends C07905-1



### Valve Train & Rocker Arm Trays

- Lightweight with built-in carrying handles
- Valve tray holds valve springs, valve locks, and the largest of valves
- Rocker tray holds pushrods, lifters, poly locks, spark plugs and rocker arms
- Designed for the home mechanic as well as the professional

Valve & Spring Tray JAZ735-001-06  
Rocker Arm & Lifter Tray JAZ735-002-06



### GM LS Series Valve Spring Compressor

Built from an exclusive design valve spring removal tools are engineered specifically to work with all GM Gen III/IV LS-type or Small Block Chevy and Small Block Ford engines. The easy-to-use custom design enables the removal of one or two valve springs at a time without the hassle of removing the rocker stand or any of the other installed rockers. The tool works both with cylinder heads installed on an engine in a vehicle or with the cylinder heads off. The simple design facilitates easy usage in vehicles where other tools are incapable of reaching the tight spaces. GM LS Series Valve Spring Compressor



C05462

### Valve Spring Compressor Tool LS1/LS2/LS6 & Vortec

This LS valve spring compressor is compact, is activated with normal hand tools, and takes up almost no space in your toolbox. It will cut valve spring removal and replacement time to around 1-hour. And, it's guaranteed to get the job done as easy, if not easier, than expensive compression tools.

SUIT CHEV/HOLDEN, LS1/LS2/LS6 & VORTEC PR67605



### Bench Top Valve Spring Tester

Use it in the shop and take it in the trailer. This is a fast and easy-to-use precision bench-top valve spring tester. Just bring the spring to installed height, lock down the precision stop and check a box of springs quickly, easily and with precision accuracy. The innovative horizontal design and footprint gives it stability on the bench top. It is rugged enough for ever day use in the shop yet designed for portability on the road.

Spring Tester 0-600 psi  
Spring Tester 0-1000 psi

LSMSM-600  
LSMSM-1000



### Valve Seat Pressure Tester

Adjustable on-head valve spring pressure tester for various shaft style and stud mount roller rocker systems. It features a 0-600 lbs liquid filled gauge and is available in standard or low profile configurations. Comes with adjustment shim kit which enables adjustment to within .050" of rocker arm pivot length. Includes set-up and adjustment guide. (Low profile unit handle length is 2.4" shorter than standard.)

Standard  
Short Handle

LSMPC-100  
LSMPC-100S



### Slant Handle Pressure Tester

The most versatile spring tester available! Can be used in either the slant or straight handle positions and includes a spin-off convertible handle extension. Has the complete adjustability of the PC-100 with the benefit of multiple handle configurations for engine compartment constraints.

On Head Spring Tester -  
Slant Handle

LSMPC-100SLC



### LSM Speed Handle

Fits most LSM Spring Compressors and Bench Top Testers 6" long with two 7/16" hex positions. Rotating handle is contoured for optimum thumb and finger positioning. Center location for quick spin on/spin off. Outer location provides increased leverage.

LSMSH-60



### Dual Feeler Gauge Handle

Dual Feeler Gauge Handle holds two sets of feeler gauges on the same handle and is ideal for intake and exhaust or go, no-go gauges. This gauge handle will accept various styles of 1/2" wide feeler gauges (gauges not included) depending on your application.

Dual Feeler gauge Handle

C05602



### Valve Lash Adjusting Wrench

The TQ-200 is similar to the TQ-100, but with a 1" longer handle and the ability to increase the torque setting up to 45 ft/lbs. It also features a welded-on socket for a long service life in a high torque environment. Ideal for steel rockers and used on blown alky and fuel engines.

LSM-TQ-200

### Lash Adjusting Torque Wrench

The LSM TQ-100 is a precision torque wrench and valve lash adjusting tool. The TQ-100 makes it easy to set your valve lash precisely and torque the adjuster nut to the proper setting helping to eliminate potential valve train failures.

Preset at 20ft/lbs, this tool is designed for Jesel and T&D-style rockers where the set screw changes the lash and the locking nut locks it in place. It adapts to any 3/8" drive socket and includes 1/8", 3/16", and 5/32" Allen wrenches.

Lash Adjusting Torque Wrench

LSM-TQ100-3





## Dual Feeler Gauge Handle

This handy tool is commonly used with 2 feeler gauge strips, one for intake and one for exhaust lash settings. This makes trackside lash settings quick and easy with no more fumbling for the correct size. The LSM dual feeler gauge handle accepts any 1/2" wide feeler gauge and can hold up to .110" of feeler gauge stock so it can be configured differently depending on the user's requirements. Feeler gauge not included.

**Dual Feeler Gauge Handle - Blue** LSMFH-200B

**Dual Feeler Gauge Handle - Black** LSMFH-200BK

**Dual Feeler Gauge Handle - Red** LSMFH-200R

## LSM Spring Changers

We developed the standard for changing valve springs with our innovative designs. The LSM Spring Removal Tools are simply the best quality, and easiest to use. It makes changing valve springs a fast and simple one-man job.

### Stud Mount Spring Changer

- Stud mount spring changer for all 7/16 stud mount rocker systems.
- 3/8" stud adapter available separately

**Part Number** LSMSC-800

**3/8" Stud Adapter** LSMSC-801

### LS Series Spring Changer

- Suits LS1/6 LS2/3 & LS 7 engines
- Up to 1.5" Diameter Springs
- Uses Factory 8mm Holes

**Part Number** LSMSC-125

### SC-100 Spring Changer

Applications:

- Small Block Chevy w/ Jesel, T&D.
- Buick w/ Jesel
- Dodge W-8 w/ Jesel
- FE Ford Jesel only
- Chrysler Indy 440-1 head w/ Jesel.
- Barton Hemi exh. only w/ slight mod.

**Part Number** LSMSC-100

### SC-150 Spring Changer

- Small Block Pontiac w/ T&D.
- Windsor Ford w/ Jesel, T&D
- Allan Johnson SBC w/ T&D
- FE Ford w/ T&D
- Chrysler B-1 w/ T&D 5/8 shaft system
- Fred Brewer AMC w/ T&D

**Part Number** LSMSC-150

### SC-200 Spring Changer

- Big Block Chevy w/ Jesel, T&D.
- Small Block Chevy cantel/splayed valve
- SB2 w/ T&D, SB2 w/ Jesel (Straight Rocker).
- Ford C-460 exhaust only w/ T&D, Jesel (SC-500 int.)
- Chevy V6 w/ Jesel, T&D
- Yates Ford w/ Jesel, T&D
- P-5 Dodge w/ Jesel

**Part Number** LSMSC-200



### SC-400 Spring Changer

Applications:

- Jesel J2K changer
- SB2 w/ Jesel J2K Rockers
- SC1 w/ Jesel J2K Rockers
- P-7 Dodge w/ Jesel J2K

**Part Number** LSMSC-400

### SC-500 Spring Changer

Applications:

- Big Chief / 14 degree Olds Intake Spring Changer w/ T&D, Jesel
- Ford C460 intake w/ T&D, Jesel. (SC-200 for exhaust.)

**Part Number** LSMSC-500



### SC-320 Spring Changer

- Big Block Chrysler w/ B1 Heads

**Part Number** LSMSC-320

### SC-501 Spring Changer

Application:

- Big Chief / 14 degree Olds Exhaust Spring Changer w/ T&D, Jesel

**Part Number** LSMSC-501

### Big Chief Set

Includes 2 complete tools:

1 x SC-500 and 1 x SC-501

**Part Number** LSMSC-51

## Big Chief Kit

Includes:

- Intake (SC-500) base and beam
- Exhaust (SC-501) base and beam
- One shared head assembly

**Part Number**

LSMSC-520



### One Tool Valve Lash Adjuster (T-Handle Not Included)

The LSM "One-Tool" is like having 16 valve lash adjusting tools in one. "One-Tool" configures to adjust ALL shaft and stud mount rocker systems on the market today. Now you don't have to buy a new valve lash adjusting wrench for each different rocker system. Buy "One-Tool" and you will always have the right tool to adjust your valves no matter what rocker system you have. Just snap on the appropriate standard 1/2" drive socket, insert the correct hex key and you are good to go.

**One Tool Valve Lash Adjuster** LSM1T-100



### Universal Head Off Spring Compressor

The LSM Head Off Valve Spring Compressor features a proprietary Wave-Beam design that gives it ultra-rigidity in a lightweight package. With a dual adjustable design that allows for the perfect positioning and easy access to valve and spring and a spring cage with a small 1" I.D. diameter flange it works perfectly with most popular valve springs.

**Universal Head Off Spring Compressor** LSMSC-2000

### COMP Cams Crankshaft Sockets

COMP Cams crankshaft sockets are the perfect addition to your engine-building toolbox. They accept 1/2 in. drive ratchets for versatility and easy engine rotation. They're precision-machined for an accurate fit over the crank snout, and their knurled retaining nut threads-on to sandwich a degree wheel in place. The nut can be loosened, while on the crank snout, so that the wheel can be turned independently of the engine when finding top dead centre.

**Fits Engines with a 1.255 in. I.D. Crankshaft Snout** C04793

**Fits Engines with a 1.610 in. I.D. Crankshaft Snout** C04797

**Fits a 1.385 in. I.D. Crankshaft Snout with 3/16 in. & 1/4 in. Keyways** C04798

**Fits a 1.542 in. I.D. Crankshaft Snout with 3/16 in. & 2X 1/4 in. Keyways** C04799

**LS1/LS6 Crank Socket, 1/2 in. Steel** C04914

### COMP Cams Cam Degree Kits

With these cam degree kits, you can dial-in your cam the right way. You can check things like cam lift, base circle runout, piston-to-valve clearance, top dead centre, valve lift, valvetrain flex, and rocker arm ratio.

**C04796**

### COMP Cams Sportsman Degree Wheels

These COMP Cams Sportsman degree wheels provide exceptional precision and accuracy. Their size allows you to use them on the engine stand, or with the engine still in the vehicle. They can be bolted onto most harmonic balancers or used with a crankshaft socket.

**C04790**

### COMP Cams 16" Professional Degree Wheels

These COMP Cams giant degree wheels are machined from a 1/4 in. thick aluminium plate. They have an open design that allows degree bushing changes while the wheel is still on the engine. These degree wheels feature a 1 in. centre hole to fit with a crank socket, or you can use the included reducer bushing to fit your harmonic balancer bolt.

**C04791-1**



### Pro Degree Wheel

These degree wheels are mandatory for the professional engine builder. Accurately measures several timing functions of an engine: camshaft centreline, valve timing, TDC, BDC, etc. Marked in easy-to-read one degree increments. Made from heavy gauge metal with a silk screen finish for long-lasting use. For mounting use Crankshaft Socket No. MO61755 for Small Block Chevys.

**Pro Degree Wheel, 18" Diameter**

**18" Dual Degree "Pro Wheel",**

**for Precise Adjustments**

**MO62191**

**MO62192**

### Crankshaft Socket

#### Tool for Degree Wheel

By removing the crank hub or balancer and using a Moroso Crankshaft Socket Tool, engine builders have a positive way to turn over the engine. Broached keyway allows the socket (which fits 1/2" drive) to slide over the crankshaft snout and key. A knurled jam nut is then used to position a degree wheel. Use with Moroso Degree Wheel No. MO62191

**SB Chev, Super Duty Pontiac & GM 4 Cyl**

**MO61755**

### Valve Seat Pressure Tester

The ultimate tool for checking valve seat pressure on an assembled engine. Built-in 300 lb. reading scale is accurate to within + or - 3% with no need for math conversions. Fits roller rockers on Small Block, Big Block and 90° V6 Chevy; Ford 221-302, 351-400 SVO and Ford Windsor engines, and most other wedge-type engines. Use with Moroso Stud Mount Valve Spring Compressor No. MO62370 for the most accurate method of maintaining the valvetrain on a fully assembled engine.

**Valve Seat Pressure Tester**

**MO62390**

### E-Z Valve Lash Wrench

Our E-Z Valve Lash Wrenches make things simple when adjusting valves. We offer wrench/T-handle sets for most polylock and set screw combinations.

- High-quality wrenches constructed of 17-4 stainless steel
- Heat-treated & electro-polished to a satin finish
- T-handles are fitted for smooth operation

**9/16" (with 3/16" & 7/32" T-Handles)** POW301550

**5/8" (with 3/16" & 7/32" T-Handles)** POW301555

**7/16" (with 1/8" T-Handle Jesel Rockers)** POW301560

**1/2" (with 3/16" T-Handle T&D rockers)** POW301565

**9/16" (with 1/8" T-Handle Chrys. Hemi)** POW301570

**7/16" (with 3/16" T-Handle Chrys. Hemi)** POW301575

**1/2" (with 1/8" T-Handle)** POW301580

### Valve Lash Adjusting Torque Wrench

This is a combination precision torque wrench and valve adjustment tool that simplifies making precision valve lash settings by properly torquing the adjuster nuts every time. One tool does all "shaft" style rocker arms. It accepts any standard 3/8" drive socket (not included). Comes with 1/8", 5/32" and 3/16" hex keys.

**POW351048**

### Stud Mount Valve Spring Compressor, Heavy Duty

Heavy Duty version of Moroso Stud Mount Valve Spring Compressor features thick, laser-cut steel and billet aluminium components.

**Stud Mount Valve Spring Compressor,**

**Heavy Duty**

**Adaptor To Fit Jesel Shaft Rocker Assembly**

**MO62371**

**MO62373**

### Low-Profile

#### Valve Seat Pressure Tester

Similar to No. MO62390 shown above with low-profile design to fit under windshield and cowl of tube-chassis cars. Designed by Jerry Haas, the tool features a rocker arm "gripper" machined from billet aluminium. Scale reading from 160 to 400 lbs. allows testing of springs with higher spring pressures. Use in conjunction with Moroso Stud Mount Valve Spring Compressor No. MO62370 to maintain valvetrain

**Low-Profile Valve Seat Pressure Tester**

**MO62391**

### Stud Mount Valve Spring Compressors

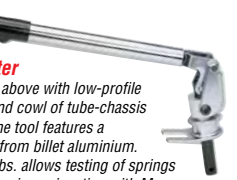
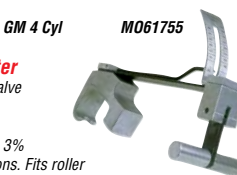
Between-rounds valve spring changing is greatly simplified with this tool. Unlike models offered by other manufacturers, Moroso's stud mount tool fits both 3/8" and 7/16" rocker studs and is much stronger in the handle area to withstand the pressures of today's "extreme high pressure" valve springs. The 12" handle gives all the leverage needed to compress the strongest springs.

**Stud Mount Valve Spring Compressor**

**Adapter to fit Jesel Rocker Shaft Setup**

**MO62370**

**MO62372**





### Cam Checking Tool: GM & Ford

These Cam Checking Tools slide down into the lifter bore and ride on top of the camshaft in order to measure lobe lift and base circle run-out.

- Comes complete with two followers: one for flat tappet or hydraulic cams and one for roller cams
- Two different versions are available and each one is double ended
- An O-ring on each end holds the tool securely in the lifter bore
- For use with any standard dial indicator (not included)

POW101400



### Valve Lash Wrench Set

T-Handles. This simple T-handle and wrench set makes adjustment very easy, cutting the adjusting time in half. Simply position the adjusting handle wrench over the rocker arm lockdown (make sure you have purchased the set with the proper sized wrench), and drop the appropriate T-handle down through the hole in the wrench - with one hand doing the job of two! Then make the lash adjustment with a feeler gauge according to the camshaft manufacturer's specifications.

1/2" with 3/16" & 1/8"

7/16" with 1/8"

9/16" with 3/16" & 7/32"

5/8" with 3/16" & 7/32"

PR66778

PR66779

PR66780

PR66781

### Tall Valve Spring Height Micrometre

Measure installed valve spring height conveniently and accurately. Simply install the height micrometre instead of a valve spring, and the rotate the clearly engraved dial to expand the tool to seat the valve, locks and retainer.

For 1.600" - 2.100" Installed Height

For 1.600" - 2.100" Beehive Springs

For 1.400" - 1.800" Installed Height

PR66902

PR67390

PR66903

### Universal Degree Wheel Kit

For use with heads on engine. This kit contains all the tools needed to degree cams in the most popular engines, assuring proper cam timing and lobe lift. Features deluxe components including 9" degree wheel, dial indicator, dial indicator mount, 2 valve check springs, clamp kit, 14mm top dead centre locator, wire degree wheel pointer, detailed instructions, and a durable foam padded carrying case.

Degree Wheel Kit

PR66787



### 16" Billet

### Aluminium Degree Wheel

Oversized wheel with large numbers makes reading this billet aluminium degree wheel easy!

PR67490

### Universal Cam Checker Tool

This easy-to-use tool simply slides down into the lifter bore and is adjusted until expanded securely.

Supplied with two followers: one for flat tappet cams and one for roller cams. Fits lifter bores from .750" to 1.050".

Universal Cam Checker Tool

PR68902

### Cam Checker Tool

Includes 0-1.000" Dial Indicator 66962 (0.001")! With O-rings on each end to assure securing positioning, this unit slides down into the lifter bore and sits atop the camshaft for accurate measurement of lobe lift and base circle runout. Supplied with two followers, one for flat tappet or hydraulic cams, and the other for roller cams. Designed for GM (.842" dia.) and Ford (.875" dia.) applications.

GM/Ford Cam Checker Tool

PR66838

### Cam Checking Fixture (with Cylinder Head Off)

Includes 0-1.000" Dial Indicator 66962 (0.001")! No more fumbling with a magnetic base and a dial indicator to measure cam lift. This fixture maintains and holds the dial indicator and 5" extension (included) in the precisely correct position over the lifters, assuring proper geometry. Supplied with 1/2" and 7/16" adapters for use with any engine block.

Cam Checking Fixture

PR66830

### Dial Indicator Accessories

Dial Indicator Bracket For Rimac Spring Tester  
Dial Indicator 0-100 Dial Face Revolution Counter 0-1.000 in .001" Increments  
Dial Extensions 5" Tip

C04903

C04909

C04912

### Valve Check Spring

These light-pressure springs make the assembly of components much easier. They provide enough pressure to hold the valve assembly together when checking camshaft figures, installed height, etc. 2 Pcs.

Valve Check Spring

PR66793

### Stud Mount Valve Spring Compressor

For all 3/8" and 7/16" Rocker Studs. Remove valve spring from an assembled engine for checking or replacing quickly and easily. Press down to compress coil spring, then remove valve keepers. Release slowly.

Spring Compressor

PR66784

### Economy Valve Spring Compressor, Stud Style

Here's your affordable yet durable way to change out the springs with heads on the engine. This heavy-duty, stud-style compressor will easily compress any spring. Works with Chevy SB & BB, Ford, and Pontiac engines.

Economy Valve Spring Comp, Stud-Style

PR66848

### Heavy-Duty Valve Spring Compressor

This heavy-duty, simple-to-use, manual valve spring compressor makes short work of even monstrous springs. The compressor arm slides for adjustment, employing a locking pin for rapid, easy operation.

Valve Spring Compressor

PR66832

### Chrysler Spring Compressor, Shaft Mounted

Heavy-duty shaft mounted spring compressor makes removing valve springs a snap while the cylinder heads are still on the engine. Bolt the tool shaft in lieu of the rocker shaft, place the feet over retainer, put the handle on and pull down. Affordable and easy to use!

Small Block Chrysler Spring Compressor

PR67460

Big Block Chrysler Spring Compressor

PR67461

### MINI SPRING TESTER AND MEASURING COMBO

With this all-in-one tool, you'll no longer need to use a ruler or micrometer to measure spring height. Simply set the spring height with the highly refined measurement tube (0.01" increments), put it in the vise and start testing. Max spring diameter is 1.7". 0-600 x 10 lbs Mini Spring Tester & Measuring Combo

PR66841

### DIGITAL MINI SPRING TESTER AND MEASURING COMBO

With this all-in-one tool, you'll no longer need to use a ruler or micrometer to measure spring height. The back lit digital display provides accuracy in 2 lbs. increments. Simply set the spring height with the highly refined height micrometer tube (0.01" increments), put it in the vise and start testing. Max spring diameter is 1.7". 0-700 x 2 lbs Digital Mini Spring Tester & Measuring Combo

PR66842

### Valve Spring Pressure Tester

Need to check spring pressure at the track? No problem with the PROFORM stud style valve spring compressor. This fully adjustable tool fits easily onto your rocker arm for pressure checks and will measure pressure up to 600 lbs.

Valve Spring Pressure Tester

Replacement gauge to suit 67597 only.

PR67597

PR67597-GAUGE

### Mini Spring Testers

Here's the affordable, portable way to test springs. The hex design body is very versatile: use it in a vise or an arbor press. These hydraulic models are supplied complete with a recalibration feature and a rubber gauge protector.

0-600 x 10lb Spring Tester

PR66834

0-300 x 10lb Spring Tester

PR66835

### Heavy-Duty Bench Top Spring Testers

Accurately check spring height versus spring pressure with our new heavy-duty bench top spring tester. Check springs up to 2" in diameter and 4" in height. Separate part numbers for up to 300 lbs and 700 lbs spring pressures. Can be bench or vise mounted.

Spring Tester, 300 lbs spring pressure

PR66774

Spring Tester, 700 lbs spring pressure

PR66775

### Valve Seal Installer

Another gouged PC seal? No longer will you have worry about gouging and twisting your seals with the PROFORM valve seal installer. Works with .500" and .531 PC seals and comes with handy knurled end for better grip.

Valve Seal Installer

PR67444

### Professional Rocker Arm Stud Remover

Make stud removal easier with our professional rocker arm stud remover tool. With ball bearing action and fittings for 5/16" and 3/8", this tool is a must have for all engine builders.

Rocker Arm Stud Remover

PR66484

### Universal Cam Bearing Driver Kit

Drive camshaft bearings easily with one complete, universal kit. Now you can remove or insert camshaft bearings in nearly all engines from sport compacts and muscle cars to heavy duty trucks. The expander arm has a neoprene sleeve with the split driving plugs mounted and expanded to size. Kit comes with two sets of rubber sleeves for each expanding driver. Use the brown sleeves for thin wall bearings and the black sleeves for thick wall bearings. Range 1.25" to 2.69" (28.58 - 68.3mm). Includes: Driving shaft, driving shaft extension, expander unit, five (5) split driving plugs, two driving collars, centre cone and handy carrying case.

Universal Cam Bearing Driver Kit

PR66820

### Chevrolet Camshaft Installation Handle w/ Hardware

These effective handles provide leverage and a non-slip grip when installing or removing a cam. Hex design handle stores all necessary hardware inside. This tool will save you time, pinched fingers and nicked cam bearings.

- Universal handle includes five interchangeable adapters that fit most domestic V6 and V8 engines, including Chevrolet, Ford and Chrysler V8s
- Chevrolet specific handle fits Small and Big Block Chevy V8s and comes equipped with all necessary hardware.

POW101035

### Chevy Camshaft

### Installation Tool with Hardware

These COMP Cams Chevrolet camshaft installation handles will make installing your new camshaft simple. They have a bolt-on handle that provides good leverage as well as a non-slip grip. These handles have an opening in the end for convenient storage of installation hardware.

C04919

### Camshaft Installation Handle

For Chevy V6 and V8 engines (except hydraulic roller camshafts). Providing a solid grip, this hex design handle makes it easy to install or remove your camshaft. Installation bolts included in handle.

Camshaft Installation Handle

PR66897

### Cam Bearing Installation Tool

For Chevy small block engines.

This kit contains everything a professional needs to remove old cam bearings and to install new ones.

This task is easily accomplished by following our step-by-step instructions. Contains an arbor with drive mount, 2 drive spools, 2 spool stabilizers, and a drive cap.

Cam Bearing Installation Tool

PR66794

### Universal Push

### Rod Straightness Checker

Easily check concentricity to discard any power-robbing, bent push rods; insert pushrod between spring-loaded holders, spin the pushrod, and read the re-positionable dial indicator (.001"). Dial indicator 66962 included.

Universal Straightness Checker

PR66979



## Valve Spring Height Micrometres

This is by far the quickest, easiest and most accurate way to measure valve spring installed height. Our height mics install just like a valve spring, then the tool is expanded until it has fully seated the valve, locks and retainer. This simulated installation is what allows ultra precise readings. The tool is then read like a micrometre and is accurate to .001".

**Description**  
For 1.600" to 2.200" Height Springs



Part No.  
C04929

## Spring Seat & Guide Cutters/Arbours

Most high performance engines today require the use of larger than stock diameter valve springs. These tools from COMP Cams will allow the engine builder to machine the cylinder head to the proper size for your spring. Each cutter requires the use of an arbour/pilot, which is available in three different sizes. These arbour/pilots also will work with the valve guide cutters used for shortening the guide for a high lift cam or installing a COMP Cams Teflon seal for oil control.

### GUIDE CUTTERS

Description	Cuts Guide	Part No
.500" Valve Guide Cutter	.500"	C04715
.530" Valve Guide Cutter	.530"	C04726
.630" Valve Guide Cutter	.630"	C04720
.485" Valve Guide Cutter	.485"	C04725
5/16" Arbour/Pilot	-	C04730
11/32" Arbour/Pilot	-	C04732
3/8" Arbour/Pilot	-	C04734

### SPRING SEAT CUTTERS

Description	Cuts Guide	Part No.
1.440" Spring Seat Cutter	.560"	C04733
1.580" Spring Seat Cutter	.560"	C04735
1.680" Spring Seat Cutter	.560"	C04741

### Spring Seat Cutters

**Description**  
**Cuts Guide**  
1.440" Spring Seat Cutter .630"  
**Part No** C04718



### Mini Valve Spring Tester

- Hydraulic mini tester is designed to be portable and low cost alternative to bench top style spring testing
- 0-1000 lb. tester scaled in 20 lb. increments
- Includes rubber gauge protector and recalibration feature
- Hex-design body can be placed in a vise, used with an arbor press or used in a drill press (w/ flange)
- 1-1000 lbs. Mini Valve Spring Tester

**Calibrated Test Spring**



C05314  
C05316



### Valve Check Spring

These light-pressure springs make the assembly of components much easier. They provide enough pressure to hold the valve assembly together when checking camshaft figures, installed height, etc. 2 Pcs.

**Valve Check Spring** ISK100-LSK



### Calibrated Spring

Each spring is calibrated at two points. 1.75" & 1.375". The 1.75" reading falls in the range of 70 lbs. and the 1.375" reading is in the range of 170 lbs. These springs are a useful aid for determining proper spring tester performance.

**Calibrated Spring** C05316

### Valve Spring Compressor

Designed for removing overhead valve springs without removing the cylinder head. Hex head on centre screw permits use of a socket wrench. Sliding T-handle provided. Offset jaws are long enough for use on high performance engines.

**Valve Spring Compressor**



POW351015



### Torque-T Spark Plug Wrench

The MTI Torque-T Spark Plug Wrench was designed for use with hemi applications. The Torque-T provides sufficient torque to ensure a proper seal without stripping threads. This tool offers an adjustable torque range of up to 20 ft. lbs. and is made to clear the taller MSD mags. It is available in 5/8" or 13/16" socket sizes.

5/8" T Wrench  
13/16" T Wrench

MTI-PLUGT  
MTI-PLUGT5-8



### GM LS LIFTER RETAINING TOOL

Swapping camshafts in LS engines is made easier with this tool that prevents the lifters from falling through the bores and into the engine. The tool slides through holes in the front of the engine and holds the lifters securely in their bores. The extra-long design with integrated handle provide plenty of leverage, while the rounded pushrod-style tip eases installation. Smooth construction of high-quality materials and the proper outer diameter prevents internal engine damage and won't leave debris behind.

POW101046

## FUEL SYSTEM TOOLS



### Carb Caps

Keeps dust and other foreign material out of carburetors during transportation and storage. Manufactured from durable, high-impact plastic. Thumbscrew included.

**Fits 4 Barrel carbs with 5-1/8" dia. neck**

**Fits Dominator & King Demon carbs**



M065802  
M065803

### Carburettor Drain Cup

Now you don't have to spill fuel all over the engine when removing fuel-bowl screws to service Holley carburetors. The Moroso Carburettor Drain Cup uses a channel handle to catch dripping fuel and direct it to a holding cup. Made from fuel resistant polyethylene.

**Carburettor Drain Cup**



M065805

### Carburettor Work Stand

Designed to hold Quadrajet and both standard and spread-bore Holley carbs, this tool greatly simplifies carburetor work. Manufactured of cast aluminium with open centre and mounting pegs.

**Carburetor Work Stand**



M062070



### Carb Float Adjustment Tool

Easily adjust your carburetor float level with this hand float adjustment tool. 5/8" socket and built-in screwdriver blade protects your engine and hands from fuel spray.

**Carb Float Adjustment Tool**



PR67443

### Aluminium Power Valve Remover Tool

Never damage your metering blocks again! PROFORM's new aluminium power valve remover tool makes power valve removal a snap. Simply place the tool over the power valve and give it an easy turn.

**Aluminium Power Valve Remover Tool**



PR67454



### Racer's Nitrous & Fuel Pressure Gauges

Designed with the professional in mind, these gauge kits are engineered with greater accuracy and convenience. Each gauge includes a Schrader valve fitting for quick and accurate pressure checks to help maximize your performance run after run. Also features a 1' steel braided hose extension for extra convenience. Fuel pressure gauge measures from 0-30 PSI while the nitrous gauge measures from 0-1500 PSI.

2-1/4" - Racer's Fuel Pressure Gauge NOS15930  
2-1/4" - Racer's Nitrous Pressure Gauge NOS15931



### Nitrous Jet Drills

A complete set of numbered drills from .0135 to .098, comes packaged in a durable carrying case for precision drilling of brass fuel and tunnel jets. A must for the toolbox of every serious tuner. Not for use with precision SS jets.

**Jet Drills .0135 to .098**



NOS15992

### Nitrous Bottle Nut Wrench

Special wrench designed for quick removal of bottle nut adapters on NOS Hi-Flo & Super Hi-Flo valves without damage. Short handled design prevents overtorquing.

**Bottle Nut Wrench**



NOS16130

### Fogger Nozzle Tap

This tap will be required to install all NOS Fogger nozzle into a manifold. Its somewhat unique size may make it difficult to find locally, but we've got you covered.

1/16 NPT Pipe Tap

NOS159:



### Carb Stand

Aluminium stand simplifies carb maintenance and will hold carb off of work bench surface. Works with Edelbrock, Quadrajet, and Holley 2- and 4-barrel carbs.

**Carburetor Rebuild Stand**



RS-ALL26200

## IGNITION TOOLS

### Spark Plug Thread Chaser

A stripped spark plug hole is not a fun thing to fix. Avoid this trouble by using our Spark Plug Hole Thread Chaser to renew damaged threads and allow firm seating of plugs. Our long 13/16" hex design prevents wobble, while the neoprene ring holds the heat-treated chaser snugly in your socket. Our tool is double ended to fit both 14mm and 18mm threads.

**Spark Plug Thread Chaser**



POW351690



### Spark Plug Viewer w/ LED Light

- 6.4X Fire Polished, B1-Convex Optic Lens
- Powerful white light LED floods the insulator cavity with light for accurate inspections
- Longer life LED lamp
- Lower voltage for longer battery life
- Easy one-handed on/off switch
- Black anodized billet aluminium flashlight housing
- 2 AA batteries included

**Magnifying Spark Plug Viewer, LED Light**

M062348



### Moroso Spark Plug Indexer

Moroso's "Indexer," is designed for both flat- and taper-seat 14mm spark plugs. Once a given plug is selected (placed in a cylinder head and found to have the correct ground wire position), it is placed in the Moroso Plug Indexer and the position of the ground electrode marked on the black anodized surface. This marking provides a reference for checking other plugs to be used in the same cylinder.

**Spark Plug Indexer**

M062160



### Spark Plug Gapping Tool

This Spark Plug Gapping Tool is perfect for checking and adjusting standard spark plugs. Steel construction and compact design make this an essential addition to any toolbox.

POW301070

### Pro Spark Plug Viewer

For reading spark plugs, or close up inspection of parts, this is the tool to have. The hooded design of our Pro Spark Plug Viewer is perfect for viewing plugs and the 10X power magnification is aided by the light that shines directly on the item being inspected. Yes, this is the same one you see the pro's using on TV to tune their engines. Powered by two "C" batteries (not included).

**POW301080**

#307065

#307066



### Terminal Tools

Weatherpack style terminals offer many significant benefits over conventional terminals, including superior resistance to the elements and a mechanically secure connection. But without the correct tools, they can prove very difficult to assemble and service. This series of terminal service tools from FAST is the ideal solution for the removal and installation of many types of Weatherpack connectors and will provide years of dependable service.

**Description**

**Yellow Extractor Tool (for Round Terminals)**  
**Green Extractor Tool (for Flat Terminals)**  
**Crimp Tool**  
**Wire Stripper**

**Part No.**

**FAST307065**  
**FAST307066**  
**FAST307067**  
**FAST307068**



#307068





### Mini Stripper Crimper

This special tool is an inexpensive way to make a set of custom plug wires. It provides a "die" to strip either 8mm Heli-Core or 8.5mm Super Conductor Wire, then can be used in a vise to provide a solid terminal crimp to the wire.

Mini-Stripper-Crimper MSD3503



### Pro-Crimp II

If you make numbers of plug wires or do a lot of custom wiring, the Pro-Crimp Tool is a must for your toolbox. The Pro-Crimp features interchangeable jaws allowing for a variety of different style crimps with one heavy duty tool. The Pro-Crimp features a hardened steel frame with comfortable molded hand grips. The slick ratchet action provides secure, factory quality crimps every time. The Tool is supplied with precision crimping/ stripping jaws for MSD's spark plug wire terminals.

Pro-Crimp Tool MSD35051

### Pro Crimp Dies

These interchangeable dies are for use with the MSD35051 Pro-Crimp Tool.

Amp Pin Terminal MSD3506  
Amp Lug Terminal Dies MSD3507  
Plug Wire Terminal Dies MSD3508  
Weathertight Terminal Dies MSD3510



### LEAD ASSEMBLY TOOL

XPRO Lead assembly tool for 8mm (5/16") and 8.5mm (21/64") wires AF4030-3503



### LEAD CRIMP TOOL

The Aeroflow ignition lead crimp tool is perfect for helping you make professional quality crimps when assembling your ignition leads. Standard jaws suit 8.5mm (11/32") leads. Optional jaws are available to suit insulated and non insulated electrical terminals for auto electrical applications.

AF98-2070 Crimp tool with 8.5mm (11/32") lead jaws  
AF98-2071 Crimp jaws suit insulated electrical terminals  
AF98-2072 Crimp jaws suit NON-insulated electrical terminals



### Self-Powered Timing Light

An accurate timing light is extremely important to the performance of your engine. MSD's new Self-Powered Timing Light is a tool every performance tuner should have. A great feature of the Self-Powered Timing Light is that it does not require 12 volts. This means less wires are hanging over the engine compartment and makes for quick, easy checks. For power, the Light uses six AAA batteries. The lightweight assembly is injection molded for great durability and produces an intense strobe that is easy to view through 5,000 rpm. The inductive pickup is detachable for easy storage.

Self-Powered Timing Light MSD8991



### MSD Timing Pro Timing Light

This MSD Timing Pro is constructed with solid state circuitry and uses a Silicon Controlled Rectifier (SCR) that provides accurate and stable timing signals from 0 to 8,000 rpm. This rugged timing light is built to work in rough environments such as racing pits or professional mechanic shops. The MSD Timing Light's lightweight assembly is injection molded for great durability and produces an intense strobe that is easy to view even in daylight. The inductive pickup is detachable for easy storage and for safety measures while the battery clamps provide a strong grip to the terminals. The battery clamps are color-coded and insulated for tight, safe connections.

MSD Timing Light MSD8992  
Replacement Cable for MSD8992 MSD89921



### MSD Ignition Testers

If a race engine hesitates or bumbles on the track, the first thing that is suspected is the ignition system. MSD offers three ignition testers to assist racers when troubleshooting in the pits. These Testers allow you to check the operation of the ignition control and coil without removing them from the car! You can also confirm rev limits, shift points, tachometer accuracy and more by varying the rpm with the two control knobs. Every racer's toolbox should have an MSD Ignition Tester.

Single Channel Ignition Tester MSD8998  
Multi-Channel DIS Ignition Tester MSD8996  
Midget Ignition Tester MSD8994



### Self-Powered Timing Light

PROFORM's affordable self-powered timing light eliminates the difficulty of setting your ignition timing. Each light weight designed unit comes standard with 2 D-size batteries, built-in flashlight and spare bulb, and protective rubber bezel. No battery leads needed, so it's easy to use! Effortless 1-wire hookup, simply connect slide trigger open, place over # 1 wire, and close!

Self-Powered Timing Light PR67414



### Timing Tab with Built in L.E.D Timing Light

This billet aluminium timing tab has a built-in self-powered L.E.D. timing light which dispenses with the need for a separate timing light or car battery hookup. Permanently mounted so there's no need for additional timing lights. The hands free design allows one person to set timing.

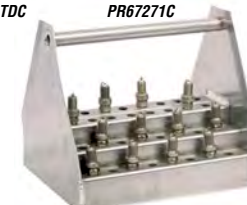
Chev Small Block, 7" Balancer PR67275C  
Chev Small Block, 7-1/4" Balancer PR67276C  
Chev Big Block, 8" Balancer PR67277C  
Chev Big Block, 7" Balancer PR67279C  
Chev Big Block, 7 1/4" Balancer PR67280C  
Chev Big Block, 8" Balancer PR67281C  
Ford 289-351W, 10 O'clock TDC PR67270C  
Ford 289-351W, 11 O'clock TDC PR67271C



### Junior Plug Caddy

Holds 48 plugs. Specially designed for the sportsman classes. Provides an easy way to keep plugs organized and in order. Dimensions: 10.5"W x 9"H x 8.25"D (267 x 229 x 210mm).

Junior Plug Caddy PIT-230



### Pro Plug Caddy

Pro Plug Caddy holds 64 plugs. Ready for 4 qualifying, 4 elimination rounds. Provides an easy way to keep plugs organized for Crew Chiefs to read. Dimensions: 12"W x 6"H x 10.5"D (305 x 152 x 267mm).

Pro Plug Caddy PIT-231



## TRACK & SHOP TOOLS



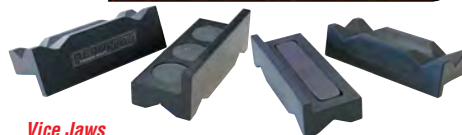
### Dayco Belt Diagnostic Kit

The #1 complaint with belts today is noise and the #1 cause for belt noise is misalignment.

The new Dayco Belt Diagnostic Kit has all the tools to properly identify misaligned worm belts and check belt tension.

Arming professional technicians with this innovative tool will help save diagnostic time, reduce returns and improve customer satisfaction.

Kit includes Dayco Laser Alignment tool, Kriket Gauge for PK belts and Awareness Gauges, complete with instructions. PB93874



### Vice Jaws

These vice jaws will securely hold the AN fittings without a hint of scratching the anodizing while you assemble the fitting. The back of the jaws have magnets which holds the jaw firmly in place. They come in two styles - billet aluminium and nylon.

Part No Description  
AF98-2001 Billet anodised Aluminium Vice Jaws Magnetic Back  
AF98-2041 Billet anodised Aluminium Vice Jaws Magnetic Back Recommended for large AN fittings  
AF98-2002 Nylon Soft Vice Jaws Magnetic Back

### AN Wrench (Single)

Part No	AN Size	Colour
AF98-2005-1-03	-3	Black
AF98-2005-1-04	-4	Black
AF98-2005-1-06	-6	Black
AF98-2005-1-08	-8	Black
AF98-2005-1-10	-10	Black
AF98-2005-1-12	-12	Black
AF98-2005-1-16	-16	Black
AF98-2005-1-20	-20	Black

AN fitting alloy wrench set sold as a set or as individual pieces.



### AN Fitting Wrench Set

AN fitting Wrenches provide a perfect fit so they won't mark your fittings. All of our aluminium wrenches are anodized black and size stamped.

Part No Description  
AF98-2005 Alloy AN Wrench Set 7pc  
Note: - set includes 7 sizes from -3AN to -16AN  
Note: Single ended -20 B-nut Spanner only available separately.

Note: NOT SUITABLE for Krytalon socket nuts



B = B nut sizes

S = Socket nut sizes

### AN Fitting Double Ended Wrench Set

AN fitting Double Ended Wrenches provide a perfect fit so they won't mark your fittings. All of our aluminium wrenches are anodized black and size stamped. Fits both B-nuts and sockets.

Part No Description  
AF98-2004 Alloy AN Double Ended Wrench Set 7pc  
Notes: - Includes 7 sizes from -3AN to -20AN  
Note: Double ended -20 B-nut & S-nut Spanner only available separately.

Note: NOT SUITABLE for Krytalon socket nuts



### AN Double Ended Wrench (Single)

Part No	AN Size	Colour
AF98-2004-1-4-3	-3 and -4	Black
AF98-2004-1-6-4	-4 and -6	Black
AF98-2004-1-8-6	-6 and -8	Black
AF98-2004-1-10-8	-8 and -10	Black
AF98-2004-1-12-10	-10 and -12	Black
AF98-2004-1-16-12	-12 and -16	Black
AF98-2004-1-20-16	-16 and -20	Black



### AN Adjustable- Grip Spanner

This lightweight billet aluminium adjustable wrench with ergonomic grip, does the job in confined spaces is a must for any tool kit. Close tolerance machining gives a precise finish that is not normally found on standard wrenches.

Part No Colour  
AF98-2003 Blue  
AF98-2003BLK Black  
AF98-2003S Silver  
Note: - Adjustable from sizes -3AN to -12AN





### AN ADJUSTABLE GRIP WRENCH

Stubby Wrench kit comes with two wrenches, the small wrench features a 3.5" handle and will fit sizes from -3AN up to -10AN and the larger stubby features a 114.3mm (4.5") long handle and fits sizes from -3AN up to -20AN. Pack includes one long and one short wrench.

**Part No**  
AF98-2039  
AF98-2039BLK  
AF98-2039S

**Colour**  
BLUE  
BLACK  
SILVER



### Pit Wrench

Adjustable -3AN To -12AN & Dzus Fastner Tool  
**LSMAN-12**



### WHEELIE BAR AND GENERAL PURPOSE SPANNER

These 7" or 180mm long handle spanners are precisely marked and are used for checking and making last minute adjustments to wheelie bars. No need to carry a spanner and tape measure. One side has imperial sizes and the other side features metric sizing. These spanners are also handy as a general purpose tool for quick start line adjustments including tightening any AN fittings up to -12.

**Part No**  
AF98-2038  
AF98-2038BLK  
AF98-2038S

**Colour**  
BLUE  
BLACK  
SILVER



### COIL OVER SHOCK ADJUSTMENT TOOL

This tool helps you adjust the adjustment rings on your coil over shocks easily and without damage. Tool is universal and suits most brands of coil overs with adjusting nuts up to 3-1/4" diameter.  
**AF98-2010**



### PTFE (Teflon®) OLIVE INSTALLATION TOOL

Assists in separating teflon inner liner from braided outer. Assists in installing olive onto PTFE Hose. Tool suits 200 & 250 series hose.  
**AF98-2043** Suits -3, -4, -6 and -8 PTFE Hose



### BILLET DZUS FASTENER TOOL

Multi-function Dzus tool. Dual head for both size fasteners. Billet black aluminium construction  
**AF98-2012**



### Aero Clamp Pliers

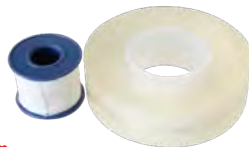
Aero clamps are recommended for extra clamping on push lock hose used in high pressure and heat applications. This tool aids in the installation and removal of all sized Aero clamps.

**Part NO** **Description**  
**AF98-2024** Fits and removes all Aero clamps

### Aero Clamps

Aero clamps are recommended for extra clamping on push lock hose used in high pressure and heat applications. 5 different sizes available.

Part No	Description
AF444-04	Suits -4 push lock hose
AF444-06	Suits -6 push lock hose
AF444-08	Suits -8 push lock hose
AF444-10	Suits -10- push lock hose
AF444-12	Suits -12 push lock hose



### Non-Stick Cutting Film

Aeroflow's non-stick cutting film is an easy and cost effective way for a neat cut every time of Kevlar or Nylon braided hose. No more struggling with sliding the socket nut over the frayed cloth braid, simply slide the nut over before removing the tape. This handy kit comes with 50m (164ft 1/2") of clear non-stick cutting film and 2m (6ft 6-3/4") of white PE film that can also be used on stainless braided hose.  
**AF98-2049**



### AEROFLOW THREAD PASTE

Aeroflow's Aero Seal thread sealing paste contains PTFE to assist in sealing and avoid binding of threads. Recommended for use with all threaded fasteners and adapters in aluminium, steel, stainless steel and plastic. Aero Seal is an anaerobic paste that remains liquefied until installation to provide a positive seal and can be used in temperature ranges from -58° to 400°F / -50° to 204°C. Sold individually or in 12 piece bulk packs.

**AF98-2023** Aeroflow thread paste 50ml squeeze tube  
**AF98-2023-12** Bulk 12 pack of Aeroflow thread paste 50ml tubes



### KEVLAR, TEFLON COVOLUTED

#### TEFLON AND 400 SERIES HOSE CUTTER

No more wasting time and hose with nasty unclean cuts, simply line up hose at 90 degrees to get a clean cut every time. Can be used with Aeroflow's Kevlar braided 7000 series, Nylon braided 7050 series and 400 series hoses.

The advantage of our cutter is the blade is dual functioning simply rotate the blade when blunt, cutter also supplied with spare blade.

**Part No** **Description**  
**AF98-2052** Kevlar, Nylon, 400 Series Hose Cutter  
**AF98-2053** Hand held cutter replacement 5 pack of blades that works out to be 10 when you include the rotation.



### 200 Series Hose Cutter

This ultra-sharp hand held cutter has been designed to use on our 200 series hose. These cutters will not leave residue as other methods of cutting does.

**Part No** **Description**  
**AF98-2016** Cuts -3 and -4 200 series teflon hose



### Hose Cutting Shears

Great for cutting all styles of Aeroflow hose including braided and rubber.

**Part No** **Description**  
**AF98-2015** Cuts -3 up to -20 Hose



### Hardline Pipe Cutter

Cut plastic, aluminium, copper or steel tubing without distorting or crushing. Cutter works with tubing from 3.17mm (1/8") up to 28.5mm (1-1/8") and has wide rollers for even tracking of cutter wheel, built in reamer for cleaning inside of tubing and an extra cutting wheel.

**Part No** **Description**  
**AF98-2022** Hardline pipe cutting tool



### Pipe Beading Tool (Large Bore)

Great for beading 5/8" pipe and larger for intercoolers and more.

**Part No** **Description**  
**AF98-2017** 5/8" and larger pipe beader



### Light Weight Tube Bender

A hand tool for precisely bending pipe, especially a little tweak during installation in that hard to get position. For pipe size 1/16 to 1/4. The tool is able to bend tube with nut installed

**Part No** **Description**  
**AF98-2009BLK** Tube Bender



### Tube Straightener

Great for straightening out coiled aluminium, mild steel and stainless steel pipe for that professional finish.

**Part No** **Description**  
**AF98-2018** Fits tube from 3/16" to 1/2"



### Flare Tool

Aeroflow's 37° and 45° flaring tools will work with tubing from 3.17mm (1/8") right through to 19.05mm (3/4").

**Part No** **Description**  
**AF98-2007** Flare Tool 37° (AN tube nuts & sleeves)  
**AF98-2008** Flare Tool 45° (Brake lines)



### PROFESSIONAL SINGLE & DOUBLE FLARE TOOL KIT

The new Aeroflow Brake Flaring tool is the fastest way to get a professional single or double flare everytime! This easy to use flare tool comes with 6 assorted metric and imperial dies, including the popular 3/16" brake line which requires a double flare to meet ADR standards. This flaring tool produces convex and double flares to SAE and DIN standards in seconds while the smooth die does not mark the tubing. Comes with an easy carry case.

- Features:
- Easy to use
  - Perfect for brake or transmission lines
  - Create single or double flares
  - 6 assorted dies included
  - Carry case
  - 45° flare or 37° flare (optional)

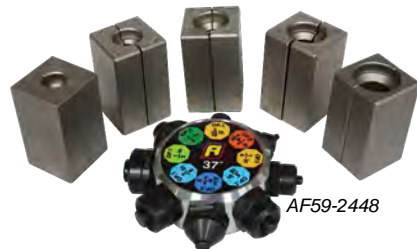
Want to see how easy this tool is to use?

Check out the video [www.youtube.com/aeroflowperformance](http://www.youtube.com/aeroflowperformance)

**Part No** **Description**  
**AF98-2048** Pro flaring kit. 4.76mm (3/16") to 9.52mm (3/8") tube single & double flare. Comes with 45° flare head & dies for brake lines.

**AF59-2448** 37° AN flare head and dies for flaring hardline to suit AN adapters. 4.76mm (3/16") to 12.7mm (1/2")

**AF59-2449** Replacement handle only  
**AF59-2450** 1/4" 45° tube clamp die replacement  
**AF59-2453** 3/16" 45° tube clamp die replacement  
**AF59-2454** 3/8" 45° tube clamp die replacement  
**AF59-2451** option 1 3/16" flare die replacement  
**AF59-2451** option 2 3/16" flare die replacement



AF59-2448





### SINGLE & DOUBLE FLARE TOOL

This 45 Degree tool will work with 3/16" and 4.75mm tubing. Single or double flare tubing in hard to access areas on vehicles or onsite.

**AF98-2057 Flare Tool 45 degree**



### Pipe Beading Tool (Small Bore)

Great for beading 7.94mm (5/16"), 9.52mm (3/8") and 12.7mm (1/2") pipe.

Note: Tool is designed for beading pipe gradually. Do Not over tighten on first stage, tighten gradually to increase bead in multiple stages. Must use lubricant.

Part No	Description
AF98-2019	5/16" pipe beader
AF98-2020	3/8" pipe beader
AF98-2021	1/2" pipe beader



### PRESSURE TEST TAGS

Plastic zip style tags for tagging tested lines with date and pressure.

AF98-2060	Pack of 10 Tags
AF98-2061	Pack of 50 Tags
AF98-2062	Pack of 100 Tags



### THREAD IDENTIFICATION KITS

Metric kit includes male and female M9x1.0, M10x1.0, M10x1.25, M10x1.5, M10x1.75, M12x1.0, M12x1.25, M12x1.5, M12x1.75, M14x1.5.

Imperial kit includes male and female, 5/16"-18, 5/16"-24, 3/8"-20, 3/8"-24, 7/16"-20, 7/16"-24, 1/2"-20, 9/16"-18, 9/16"-20, 5/8"-18.

AF98-2055	Metric thread identification kit
AF98-2056	Imperial thread identification kit



### Plastic Dust Caps & Plug Kit

This 96 piece of assorted sizes -3AN to -20AN caps and plugs fit 37 degree flared fittings and straight threaded ports. A must for keeping debris out of lines and hoses. Ideal for keeping internal components of fuel pumps, pressure regulators and dry sump pumps etc, clean during storage.

Part No	Description
AF98-2025	96 piece assorted sizes -3AN to -20AN



### Billet Dzus Fastener Tool

Multi-function Dzus tool. Dual head for both size fasteners.

Part No	Description
AF98-2012	Billet black aluminium construction



### Coil Over Shock Adjustment Tool

This tool helps you adjust the adjustment rings on your coil over shocks easily and without damage. Tool is universal and suits most brands of coil overs with adjusting nuts up to 3-1/4" diameter.

Part No	Description
AF98-2010	Coil over shock adjustment tool



### Quick Fastener Dimple Tools

These tools provide the professional quality dimple necessary for flat head button applications

Pro-werks Dimple Tool - Wrench Type	PWC73-540
Pro-werks Dimple Tool - Hammer Type	PWC73-541

### Transfer Punch

The transfer punch is used to accurately transfer the hole location on to the attaching panel. Punch fits in tab with or without spring installed.

Quick Fastener Transfer Punch	PWC73-544
-------------------------------	-----------

### Proform Socket Assist

Essential tool for bolts with tight clearance like spark plugs and header bolts! 12-point for maximum finger traction. Set of three including 1/4" x 1/4", 1/4" x 3/8", 3/8" x 3/8" (12 pt x socket size). Belongs in every tool box!

Socket Assist



PR67575

### Tubing and Pipe Notcher Tool

Designed for the serious fabricator. 0 to 45 degree, 1 degree increments, adjustable vise and made of high-grade aluminium.

Tubing and Pipe Notcher Tool	PR66482
------------------------------	---------



### Pinion Setting Tool

For rear ends. Universal pinion setting tool so you can measure pinion depth of most automobiles and trucks.

Pinion Setting Tool



### Splined Clutch Alignment Tools

- Made from high impact plastic for strength and durability
- Speeds clutch/transmission assembly by aligning clutch disc and flywheel prior to installation of transmission input shaft

GM, 1-1/8" x 10 Spline	MG6940
GM, 1-1/8" x 26 Spline	MG6941
Ford, 1-1/16" x 10 Spline	MG6942
Chrysler, 1-3/16" x 18 Spline	MG6960



### Professional Angle Finder & Level

This handy direct-read gauge is perfect for setting pinion angle or determining level on a race car or roll bar installation. Made from ABS plastic with a convenient grooved base to sit flat on round surfaces. It is accurate to 1/2 of 1° and features an easy to read gauge face and angle and grade chart on back of gauge.

Professional Angle Finder & Level	MOC5020
-----------------------------------	---------



### Power-Speed

#### Calculator

Moroso's Power-Speed Calculator is like having a dyno in your back pocket! Using information such as tire size, gear ratios, horsepower and displacement, this handy slide tool works out the relationship between: E.T. and mph, Tyre diameter to speed and gear ratio, Engine displacement to compression ratio, Power to weight ratios and many more factors that go into building a race-winning car.

Power-Speed Calculator	MO89650
------------------------	---------



### Safety Wire

Moroso Safety Wire is widely used to secure all kinds of fasteners and controls from nuts and bolts to check valves, switches and modulators where a loose or lost component might mean disaster. Made of .032" diameter 304 stainless steel; comes in one-pound cans.

Caution: Safety wire should not be reused.

Safety Wire, 1 lb tin	MO62280
-----------------------	---------



### Safety Wire Twist Pliers

Get three tools in one with our spring loaded, automatic return, safety wire pliers.

You get a cutter, wire twister and a heavy duty pair of pliers. You can grip, twist and snip safety wire faster and better than ever before. Designed for aircraft, industrial and other "vibrating" applications. The Safety Wire Twist Plier is a versatile tool to help you do reliable safety-wiring (lockwiring) rapidly and consistently.

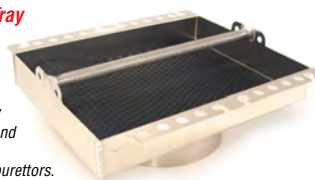
Safety Wire Twist Pliers	MO6023G
--------------------------	---------



### Carb-Top Tool Tray

Made from lightweight, durable, .063" aluminium in two styles for Holley and Demon 5-1/8" and Dominator and King Demon 7-5/16" carburetors. Also fits other carburetors with similar neck diameters. Each Tool Tray sits just 2-1/2" above the carburetor and features a convenient handle, 1/8" rubber mat, 16 spark plug holders, 8 plug wire holders and enough room to store a variety of tools for working on just about any engine. Inside tray dimensions: 10" x 13"

Carb-Top Tool Tray, 5-1/8" Diameter. Carbs	MO65800
Carb-Top Tool Tray, 7-5/16" Diameter. Carbs	MO65801



### Safety Wire & Pliers

RPC stainless steel safety lock wire is .032" diameter and is sold as a 1lb (350 ft) can. It is available as a kit with 9" safety wire pliers or both items are available separately.

9" Safety Wire Pliers

Safety Wire, .032" x 350 ft.

Safety Wire & Pliers Kit

RPCR809

RPCR811

RPCR812



### Ratchet Tie-Downs

High strength ratchet tie-downs secure racing vehicle to trailer or transporter. 2" nylon webbing featuring a ratcheting buckle with integral hook and snap hook at opposite end. Convenient and easy to use, these tie-downs go on and off with a few flicks of the wrist. Sold in pairs, each piece 8' long.

Description	Part No.
8' Long Ratchet Tie Downs, Pair - Black	SI35007BK



### Axle Straps

Ties down racing vehicle via axle or wrap around the frame. 24" long with 2" webbing and D-rings on both ends.

Description	Part No.
24" Long Axle Strap, Each - Black	SI35010BK



### Tow Strap

15' Long tow strap is looped at one end with a sail hook and D-ring at the other end.

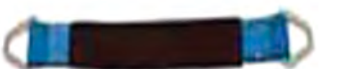
15' Long Tow Strap, Each - Black	SI35008
----------------------------------	---------



### Scuff Edge Ratchet Tie Down

Rated at 10,000 lbs. Hi Tech fibre in superweb makes it stronger and cut-resistant. PVB coating is weather resistant. Colours may vary.

Scuff Edge Ratchet Tie Down	PIT-500C10
-----------------------------	------------



### Axle Strap

Rated at 10,000 lbs. 21" strap with thick, protective sleeve. Ideal for various attachments using hook-type ends.

Axle Strap	PIT-30AS21
------------	------------



### STROUD AXLE/CHASSIS ATTACHMENT STRAPS

Race car axle/chassis tie down attachment straps (Pair)

SS36620



**Race car 16' retractable tow strap up to 2600lbs, SS7201**



#### Retractable Tow Strap

A 16' retractable tow strap. We've designed the main frame using 4130 moly for maximum strength. The hooks have clearance to slip over 1" tubing. The retractor end has provisions to be mounted vertical or horizontal by changing the bolt-on hook location or can be permanently mounted to the tow vehicle. The retractor spring is made of high strength carbon steel. All exposed metal parts have a nickel plate finish and the housing is made of moulded poly material for durability. The heavy duty nylon strap actually cushions the towing start.

**Retractable Tow Strap** PIT-JBRC-5060  
**Retractable Tow Strap with Tow Sleeve** PIT-JBRC-5060T



#### Recessed D-Ring

An industry standard item for your trailer. 5,000 lb capacity D-ring lifts from the recess for easy use. Zinc plated for corrosion resistance.

**Recessed D-Ring** PIT-10064



#### Proform No-Mess Funnel

How many times has this happened to you? You're filling up the reservoir (trans, oil, etc.) and suddenly it's full but you have a half-full funnel in your hands. How do you get that back into the jug without making a mess? Yet another patented idea from PROFORM is the trick new No-Mess funnel allowing you to fill anything without worrying about overfills. The patented ball-n-hook design shuts off flow and retains the excess fluid when lifted.

**PROFORM No-Mess Funnel** PR68068



#### Fast-Fill Funnel

This heavy-duty, unbreakable plastic, Fast-Fill Funnel has a 6 quart capacity, wide mouth and narrow filler tube, with a built-in brass screen filter.

**MG3695**



#### 14" Triangular Funnel

- Triangular shape allows filling in tight locations
- 17" Long with a built-in Anti-splash ring in the top
- Stepped spout can be cut to desired length and flow rate
- Accepts 60 Micron filter

**14" Triangular Funnel** JAZ550-014-06



#### 11" Round Funnel

- Larger round shape with a moulded-in handle
- 24" Long with a built-in Anti-splash ring in the top
- Tapered spout can be cut to desired length and flow rate
- Accepts 60 Micron filter

**11" Round Funnel** JAZ555-011-06



#### 15" "D" Shape Funnel

- "D" shape for reaching unusual places or against bulkheads
- 16" Long with a built-in Anti-splash ring in the top
- Stepped spout can be cut to desired length and flow rate
- Accepts 60 Micron filter

**15" "D" Shape Funnel** JAZ560-015-06



#### Funnel Filter

- Stainless steel filter element rated at 60 Microns
- Special Anti-splash coned top to reduce splash back
- Fits JAZ Funnels

**60 Micron Funnel Filter** JAZ500-000-01



**Large "D" Shape Funnel** RCI7010B



#### Funnels - 14" D-Shaped

14" D-shaped funnels with heavy duty construction and anti-splash lip around the top. Filter sold separately.

14" D-Shaped Funnel - Blue	SCR6110B
14" D-Shaped Funnel - Dark Blue	SCR6110DB
14" D-Shaped Funnel - Glow Green	SCR6110GG
14" D-Shaped Funnel - Glow Yellow	SCR6110GY
14" D-Shaped Funnel - Black	SCR6110K
14" D-Shaped Funnel - Orange	SCR6110O
14" D-Shaped Funnel - Purple	SCR6110P
14" D-Shaped Funnel - Red	SCR6110R
14" D-Shaped Funnel - White	SCR6110W
14" D-Shaped Funnel - Yellow	SCR6110Y

#### Funnels - 14" D-Shaped 45°

14" D-shaped funnels with 45° angled spout, heavy duty construction and anti-splash lip around the top. Filter sold separately.

14" D-Shaped 45° Funnel - Blue	SCR6115B
14" D-Shaped 45° Funnel - Dark Blue	SCR6115DB
14" D-Shaped 45° Funnel - Glow Green	SCR6115GG
14" D-Shaped 45° Funnel - Glow Yellow	SCR6115GY
14" D-Shaped 45° Funnel - Black	SCR6115K
14" D-Shaped 45° Funnel - Orange	SCR6115O
14" D-Shaped 45° Funnel - Purple	SCR6115P
14" D-Shaped 45° Funnel - Red	SCR6115R
14" D-Shaped 45° Funnel - White	SCR6115W
14" D-Shaped 45° Funnel - Yellow	SCR6115Y

#### Funnels - 14" Round

14" Round funnels with heavy duty construction and anti-splash lip around the top. Filter sold separately.

14" Round Funnel - Blue	SCR6112B
14" Round Funnel - Dark Blue	SCR6112DB
14" Round Funnel - Glow Green	SCR6112GG
14" Round Funnel - Glow Yellow	SCR6112GY
14" Round Funnel - Black	SCR6112K
14" Round Funnel - Orange	SCR6112O
14" Round Funnel - Purple	SCR6112P
14" Round Funnel - Red	SCR6112R
14" Round Funnel - White	SCR6112W
14" Round Funnel - Yellow	SCR6112Y

#### Funnels - 8" Round

8" Round funnels with heavy duty construction and anti-splash lip around the top. Filter sold separately.

8" Round Funnel - Blue	SCR6113B
8" Round Funnel - Dark Blue	SCR6113DB
8" Round Funnel - Glow Green	SCR6113GG
8" Round Funnel - Glow Yellow	SCR6113GY
8" Round Funnel - Black	SCR6113K
8" Round Funnel - Orange	SCR6113O
8" Round Funnel - Purple	SCR6113P
8" Round Funnel - Red	SCR6113R
8" Round Funnel - White	SCR6113W
8" Round Funnel - Yellow	SCR6113Y

#### Funnels - 8" D-Shaped

8" D-shaped funnels with heavy duty construction and anti-splash lip around the top. Filter sold separately.

8" D-Shaped Funnel - Blue	SCR6114B
8" D-Shaped Funnel - Dark Blue	SCR6114DB
8" D-Shaped Funnel - Glow Green	SCR6114GG
8" D-Shaped Funnel - Glow Yellow	SCR6114GY
8" D-Shaped Funnel - Black	SCR6114K
8" D-Shaped Funnel - Orange	SCR6114O
8" D-Shaped Funnel - Purple	SCR6114P
8" D-Shaped Funnel - Red	SCR6114R
8" D-Shaped Funnel - White	SCR6114W
8" D-Shaped Funnel - Yellow	SCR6114Y

#### Funnel Filter

This filter fits all five styles of Scribner funnels to keep debris and foreign matter out of the fuel tank.

**Funnel Filter** SCR6119



#### VP Funnel

Multi-purpose Funnel with Filter  
**Part No: VPFUNNEL**

#### VP SureCan® FUEL JUG

VP SureCan® is the most innovative gas can out there today! With the patented spill proof technology you will never have to bend over and tip your can or get gas on your hands ever again! The can features a rotating nozzle and thumb release trigger that allows the flow of the fuel to dispense from the bottom so you can let gravity do all the work! Other features include self ventilation, comfortable grip, and durable design. Available in 8 Litre (2.2 Gallon) and 19 Litre (5 Gallon).

- Thumb Trigger and Locking System
- Self-Venting • Comfortable Grip • Durable Design
- Child-Proof Fill Cap and Spout Cap
- Flexible Rotating Spout (No More Tipping!)

**VP-SURECAN19L** 19 Litre  
**VP-SURECAN8L** 8 Litre



#### Kevlar Mechanic's Gloves (Pair)

Protect your hands and arms from heat, cuts and abrasions. Made of 100% ballistic kevlar, our Mechanic's Gloves and Sleeves offer protection with dexterity and comfort. These are an absolute must for anybody who works around cars or equipment.



**POW301100**

#### Kevlar Crew Sleeve

These Simpson KEVLAR® sleeves are designed for mechanics and crew members to help prevent cuts or burns while working on a hot vehicle or in a hurried pit stop position. They come in bright yellow, and one size fits all.

**SI39024**



#### 5000 lb. Vehicle Weighing Scale

Proform's vehicle scale features weight and percentage for each wheel and total vehicle weight. The scale pads are 14 1/2" x 9 1/2" x 2 1/2" with a 1,250 lb. capacity per pad for a total scale capacity of 5,000 lbs. Scale is accurate to 1/10 of 1%. The scale also comes with a backlit display powered by 4 AA batteries and 20' cables, marked for the correct pad. Durable carrying case and batteries also included.

**5000 lb. Vehicle Weighing Scale**

**PR67650**



#### 7000 lb. Slim Wireless Vehicle Weighing System

PROFORM's third generation slim wireless vehicle scale includes NEW features! New features include full size 15" x 15" slim aluminium scale pads (1 5/16" thick), drive-up angle for easy setup, live stream data feed via USB cable (included) to computer with free downloadable program for viewing and file exporting, backlit LCD screen and control buttons, and a foam lined hard case with wheels for storage. Standard features include an LCD display with Cross weight, Side/Side weight, and Front/Rear weight in addition to the standard weight and percentage for each wheel and total vehicle weight. The individual scale pads have a 1,750 lb. capacity per pad for a total scale capacity of 7,000 lbs. Scale is accurate to 1/10 of 1%. Scale pads are made of die-cast aluminium, and finished in a durable black powder coat. AA batteries included.

- 7,000LB Capacity • 1,750LB Per Pad Rating
- Includes 4 Pads • 15" L x 15" W x 1 5/16" H
- Backlit LCD Display • Hard Case w/ Telescoping Handle
- PC Program for Data Export • AA Batteries Included

**7000 lb. Slim Wireless Vehicle Weighing System** PR67644



### DeskTop Dyno 5

The DeskTop Dynos offer more speed, more engine components, and improved accuracy. Designed for the serious engine enthusiast, the DeskTop Dyno simulation packages will evaluate custom cylinder heads, any cam timing, a wide range of bores and strokes, valve sizes, and connecting rod length and angularity. Plus, you can use an advanced compression ratio calculator, cam-math QuickCalculator, and even print multi-page dyno-test reports! If you want the most from your next engine buildup, use the DeskTop Dyno engine-dyno simulators. Have fun designing the "ultimate" street or all-out racing engine.

CO186011

### COMP Cams

#### Cam Disk8

Comp Cams 180908 Now you can dyno test your next engine project BEFORE you even build it. - Sim5 software can accurately simulate any 4-cycle engine - including turbo, supercharged, nitrous and alternative fuel applications. Features include hundreds of new engines, advanced modeling, expanded results graphs and tables, comprehensive printouts, automatic updating over the web, and more. As a supplement to Dyno - Sim5, we now offer Cam - Disk8 that will automatically install additional cam files to the cam library created when you installed Dyno - With this additional disk, you will have access to over 6,000 camshafts that you can search, load and

test in any simulated engine.

CO180908



### Perfect Launch Practice Tree

With the pocket sized Perfect Launch portable practice tree you can perfect your launch skills and reaction time almost anywhere. It makes a perfect affordable gift for the pro-racer, would-be racer, or anyone who just likes the thrill of competition. The Perfect Launch reaction timer features a remote thumb trigger, .4 and .5-second PRO and FULL trees, plus an adjustable delay box, bump down and rollout. Included 9-volt powered Perfect Launch shuts down automatically for longer battery life and it's affordable fun!

Perfect Launch Practice Tree

PR67025C

### Portable Weather Station

RaceAir Pro™. This all new digital weather station incorporates all the great features from our track proven RaceAir™, such as automatic air sampling, an internal fan, and "precision digital sensors for consistent air readings, plus programs for Drag Racing, Circle Track, Road Racing and Karting. Many of the programs are listed below.

- 2 Dial-In programs
  - Test & Tune
  - Fuel Injection Jetting
  - Mikuni Jetting
  - Chassis Set-Up
  - Run Completer
  - Holley Jetting
  - Precision Jetting
  - Keihin Jetting
  - Throttle-Stop program
- Portable Weather Station:** COMP-1000  
**PC Download Kit:** COMP-1001  
**Carry Pouch** CAMP-3005

### MOROSO Pro Series Tyre Pressure Gauges

Premium high-quality instruments with brass internals and Bourdon Tube Pressure Element provide full-range accuracy to within 1/2%. Extra-large 4" diameter face and knife-edge pointer eliminate human error. Adjustable pointer can be calibrated at the race track. Fiberglass-reinforced thermoplastic housing withstands harsh racing environments. Long 16" hose with pressure release valve and hardened steel swivel chuck is perfect for getting into deep-dish wheels. Rugged polyethylene plastic carrying case is lined with a medium-density, open-cell foam insert to keep gauge protected during transportation and storage

0-15 PSI

MO89552

Major increments at 3 psi with minor increments at 0.1 psi

0-60 PSI

MO89562

Major increments at 10 psi with minor increments at 0.5 psi

### Tyre Pressure Gauge Cover

Protective rubber cover insures long service and continued accuracy of Moroso 2-5/8" Tyre Pressure Gauges. Specially designed ribs on the inside and outside of the cover provide superior protection when the gauge is dropped or struck. A must for anyone who uses Moroso gauges (Nos. 89550, 89560, 89570 & 89580), or other 2-5/8" o.d. x 1-1/8" gauges

Note: Not required for Moroso's Lighted Tyre Pressure Gauges. Will not fit Pro Series tyre gauges.

Tyre Pressure Gauge Cover

MO89590

### MOROSO Tyre Pressure Gauges

Individually calibrated for accuracy within 2%. The large 2-5/8" dia. dial face is easy to read, while the hardened swivel chuck rotates 360° for positive valve stem attachment. 15-1/2" hose with a finger operated air-bleed valve allows you to release pressure quickly.

Tyre Pressure Gauge,

Dial Type, 0-15 psi

MO89550

Radial Tyre Pressure Gauge,

Dial Type, 0-40 psi

MO89555

### MOROSO Flutter Guard

#### Tyre Gauge

Individually calibrated for accuracy within 1% of the full scale. Moroso's vibration controlled dial mechanism design keeps an accurate reading under most conditions. Manufactured with stainless steel bourdon tube, movement and case. Large 2 5/8" dia. dial face is easy to read, while the hardened swivel check rotates 360 degrees for positive valve stem attachment. .15 and one-half inch hose with a finger operated air-bleed valve allows you to release pressure quickly.

Flutter Guard Tyre Gauge, Dial

Type, 0-15 psi. MO89581

### Digital Tyre Pressure Back Lit

- 2-5/8" dia. gauge face
- Accurate within .005%
- Reads to .1 psi
- Can be adjusted to read in BAR
- Auto-Off feature to increase battery life
- Battery level on gauge face
- Includes 9V battery which is easy to change
- Includes rubber gauge cover
- 16" hose with finger operated air-bleed valve allows you to release pressure quickly
- Hose has easy grip angle chuck end

Digital Tyre Pressure Back Lit Gauge,

0-15 PSI

MO89574



### Tyre Pressure Gauge

The 60psi gauge retains the last measurement until pressure is released. Patented design assures accuracy and durability, while a large dial and angled chuck enable easy measuring.

Tyre Pressure Gauge 60psi (Mechanical) AU2343

### Digital Air Pressure Gauge

This ultra quick, high accuracy, digital gauge is the choice of professionals in all types of motorsports.

- 8 Easy-To-Read 0.5" display
- Keypad Calibration
- Peak Hold
- 22" Goodyear Hose
- Backlit Display for Night Use
- Range: 0-100 PSI in 0.1 Increments
- PSI/Bar/KgCm2
- Pushbutton Zero
- Thumb-Operated Bleed-Off
- 45-Degree Swivel Chuck
- Includes Case

RS-360045

### Proform Tyre Pressure Gauges

Don't let a little tyre pressure change affect you on race day! Quickly and easily gauge tyre pressure with PROFORM's easy-to-use, hose-equipped tyre pressure gauges. 1 1/2" diameter face and heavy-duty shatterproof glass make this tool a must have for every tool box.

Tyre Pressure Gauge 0 - 60 lbs.

PR67403

Tyre Pressure Gauge 0 - 15 lbs.

PR67404

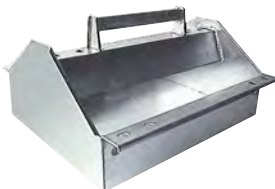


### Portable Air Tanks (125 PSI Max)

Part No	Colour	Size	Weight
AF77-3000	Black	19L (5 Gal)	5.85kg 12.9lbs
AF77-3001	Black	38L (10 Gal)	9.35kg 20.5lbs
AF77-3010	Yellow	19L (5 Gal)	5.85kg 12.9lbs
AF77-3011	Yellow	38L (10 Gal)	9.35kg 20.5lbs
AF77-4000	Aluminium	19L (5 Gal)	2.8kg 6.3lbs
AF77-4001	Aluminium	38L (10 Gal)	4.5kg 9.9lbs

AF59-3000 Black replacement air line suit all tanks





### Standard Tool Tray

This tool tray is used by many of the top racing teams. Keeps tools and parts organized when working on engines. Carb rings available separately to mount the tray on the carburettor.

Dimensions: 17"W x 8"H x 17"D (432 x 203 x 432mm).

**Standard Tool Tray**

PIT-120

### Tool Tray Carb Rings

Used to mount the tool tray on the carburetor. Available for standard 4150 style carbs or Dominator 4500 style.

**Standard 4150 Carb Ring (5-1/8" Neck)**

**Dominator 4500 Carb Ring (7-5/16" Neck)**



PIT-118

PIT-119

### Magnetic Parts Tray

An ideal receptacle to hold small parts, nuts, bolts or keys at your fingertips. A fender, a cabinet, or a steel surface will provide a place for the magnetic base to grip firmly.

Available in round and rectangular sizes.

**Round Tray**

PIT-232

**Rectangle Tray**

PIT-233



### Oil Change Drain Tray

The Drain Tray makes it simple, with a filter drain tray, and pour spout. Features an easy carry handle on the lightweight aluminium frame.

Tray has 6 quart (5.6L) capacity.

Dimensions: 15" x 2.5" x 15" (381mm x 64mm x 381mm).

**Oil Change Drain Tray**

PIT-129-0



### Engine Lift Plate

Bolts on to carby mounts for easy engine lifting.

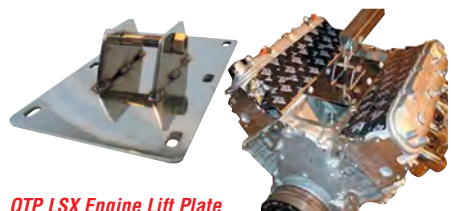
**HRP-6001**



### ENGINE LIFT PLATE

Aeroflow's Engine Lift plates allow you to lift your engine up by its intake manifold for easier manoeuvring. You can also use them as a manifold cover when you store your engine. These Aeroflow zinc plated carburetted engine lift plates fit standard Holley 4150/4160 and Dominator, Rochester Quadrajete, Carter, Demon, Quick Fuel, Motorcraft, Edelbrock, Edelbrock Q-Jet and Carter AFB carburettors.

**AF98-2045**



### QTP LSX Engine Lift Plate

You will never have to drop your LSX motor out the bottom of your car again. The QTP LSX Engine Lifting Plate will allow you to lift your engine up by its valley cover for easier maneuvering. This compact, precision tool allow for various weights to keep the engine balanced. Just remove the valley cover tray and bolt the lifting plate in place.

Construction: 304L Polished Stainless Steel, 1/4" Thick Plate, Grade 8 Nut and Bolts.

Works With All LSX Gen 3 and Gen 4 Motors

**LSX Lift Plate QTP10100**

### Engine Sling

Our engine sling makes engine changing a breeze. Simply hook it to your engine puller and attach the 4 straps to your engine using your header studs or exhaust bolt holes and pull. Plated for long lasting finish. Each royal blue polyester strap is 22" long. Great for cars with blowers or tunnel ram intakes. Dimensions: 27.5"H x 28"W x 3"D (699 x 711 x 76mm).

**Engine Sling PIT-201**



### Heavy Duty

#### Engine Stands

**RPCR1900** Engine Cradle Stand WITHOUT Wheels - suit SBC.



### GM LS ENGINE LIFT PLATE

PROFORM's steel multiple attachment point, LS engine lift plate makes getting the engine out a cinch. Simply remove the intake manifold and valley tray cover, then replace it with this robust lift plate using the existing valley tray bolts. It also acts as a valley cover for storage purposes.

- Made from Quality Steel
- Bolts To Engine Block with Valley Tray Bolts
- Three Hoist Points for Optimal Tilt
- Bolts Not Included
- Fits GM LS Gen IV, 2006-2016

**PR67459**



Perfect way to simplify installation and removal of any LS engine. Remove intake manifold and valley plate and bolt down in place using existing valley plate bolts. There are 4 holes for various chain placements for proper engine weight balance offset. Suits all GM LS engines.

**AF98-2077**

### ENGINE SUPPORT BAR

Engine support bar to assist in K frame removal.

**AF98-2065**



### ENGINE LEVELING TOOL

Assists in leveling engine and gearbox installation and removal. For use with Aeroflow engine crane.

**AF98-2064**

### ENGINE CRANE

Aeroflow's Heavy-Duty 2 Tonne Engine crane is perfect for your workshop or garage! It folds up for neat storage and is powder coated black.

**AF98-2042**



### H Frame Engine

**Stand**

**AF98-2030**

1000lb (453kg) H frame with 4 wheels

### A Frame Engine Stand

**AF98-2033** 2000lb (910kg) C frame with 5 wheels

### C Frame Engine Stand

**AF98-2031** 1250lb (567kg) C frame with 4 wheels



### Engine Cradles

Heavy Duty Engine Cradles Heavy Duty, with solid steel wheels. Made of 1" square tubing with red powder coating. Stands include Grade 5 fasteners and may be easily disassembled for storage.

Part No	Description
<b>AF98-2026</b>	CHEVY Engine cradle
<b>AF98-2035</b>	LS CHEVY Engine cradle
<b>AF98-2027</b>	FORD Engine cradle
<b>AF98-2058</b>	HOLDEN Engine cradle

### TRADE DUTY TRANSMISSION JACK

Aeroflow trade duty hydraulic transmission Jacks can handle a up to 500Kg /1100lbs. They have a double pump for a quicker lift & the 2 stage telescopic ram allows a lifting range of 850mm (33") up to 1850mm (73") via a foot pump. They have a twin tilt saddle with adjustable perimeters to suit various transmission sizes. Plus 4 heavy duty swivel castors allow for ease of relocation. Powder coated black finish.

**AF98-2073**



### Workshop Trolley

**AF98-2032** 3 Tier with lockable draw and wheels

### Qwik-Lift Vehicle Jack

**AF98-2029** Qwik-Lift vehicle jack 12" 1500lbs (680kg) each. Note: Sold individually



### CHASSIS STAND

Aeroflow's Black Chassis-Frame stand is robust and strong to get your race car in perfect position to work on. Heavy duty caster wheels make moving your race car around the workshop easy. Robust fabrication won't buckle under high load capacity. The chassis-frame stand is collapsible to lay flat for easy storage, has a brake on each stand to prevent rolling when working on the car and is lightweight.

**AF98-2054** Chassis stand will fit standard & raised rails





### Engine Stand Drip Tray

- Helps keep your shop floor clean during engine disassembly
- Designed to fit most three and four leg engine stands
- Made from durable black plastic for long service
- Cleans easily with soap and water or in a solvent tank
- Big enough to catch debris from a big block
- Small enough to stay out of your way

Engine Stand Drip Tray JAZ720-000-01



**JAZ**  
Products

### Torke Tote

- Designed to hold 8" through 11" converters
- Great for storing spares in race car trailers
- Stackable for storing multiple converters
- Keeps harmful dirt and moisture out
- Available for GM and Ford converters
- Strong enough to be used as shipping containers
- 360 degree handles make them easy to carry

GM Powerglide, TH-350, TH-400  
Ford C-4, C-6



JAZ700-100-07  
JAZ700-100-11

### Krank Kase

- Stores crankshaft in a clean safe environment
- Available for Small Block & Big Block Chevy
- Small block fits 350 and 400 style cranks
- Built in recesses allow for multiple stacking
- Keeps harmful dirt and moisture out
- Great for transporting to and from machine shop
- Strong enough to be used as shipping containers
- 360 degree handles make them easy to carry

Small Block Chevy  
Big Block Chevy



JAZ700-300-07  
JAZ700-301-11

### Head Kase

- Keeps cylinder heads clean and safe
- Small block style houses all standard style heads
- Big block style will fit Merlins
- Houses complete cylinder with studs & springs
- Stackable for storing multiple cylinder heads
- Keeps harmful dirt and moisture out
- Strong enough to be used as shipping containers
- Great for transporting to and from machine shop
- 360 degree handles make them easy to carry

Small Block Chevy  
Big Block Chevy



JAZ700-200-07  
JAZ700-201-11



### Diff Centre Protectos

- A better way to store and transport third members
- Keeps third member away from dirt and debris
- Fits all Ford 9 inch third members
- Built-in handles make for easy carrying
- Completely encloses third member
- Stackable in any direction for multiple storage

Protecto I "Horizontal"  
Protecto II "Vertical"

JAZ700-009-01  
JAZ700-010-01

**scribner**plastics

### Engine Cases

Designed to ship engines by air or road. The Chev/Ford mounting system utilizes two moulded plastic mounts (sold separately) that bolt directly to the motor mount pads on the side of the block. The engine is then lowered into the bottom half of the container. The back of the block bolts directly to the container using four of the bell housing mounting bolt holes located just above and below the dowel pins. Bolt the top half of the container in place and you are ready to ship or store your engine.

Universal Engine Case	SCR5106
Bare Block Engine Case	SCR5107
Chev/Ford Small Block Engine Case	SCR5108
Chev/Ford Short Block Engine Case	SCR5109
NASCAR Engine Case (Complete Engine & Bell)	SCR5110
Big Block Engine Case	SCR5115
Sprint Car Engine Case (with Injectors)	SCR5116
Ultra Large Engine Case	SCR5111
Harley V-Twin Engine Case	SCR5120-V2
Front Mounts for Chev - Fits 5108, 5109, 5110	SCR5108C
Front Mounts for Chev - Fits 5115	SCR5115C
Front Mounts for Chev LS - Fits 5115	SCR5115LS
Front Mounts for Ford 351W - Fits 5115	SCR5115F
Rear Mounts for Chev / Ford - Fits 5115	SCR5115R



### Manual Transmission Case

This genuine Scribner heavy duty case is made to fit four speed Jericos or T-10's. All cases include mounts and are stackable for storage or nestable when not in use.

Manual Transmission Case - 42" Long SCR5198

### Automatic Transmission Cases

Designed to ship automatic transmissions by air or road. These cases use changeable inserts to securely house most popular transmissions. Made from heavy duty Polyethylene, they feature a stackable interlocking design and are available in two sizes to accommodate most transmissions.

Automatic Transmission Case - 32" Long	SCR5120
Automatic Transmission Case - 46" Long	SCR5125
Flexi-Fit Universal Pan Insert - Fits 5120	SCR20-PAN
Flexi-Fit Universal Pan Insert - Fits 5125	SCR25-PAN
Insert for TH350, TH400, TH700-R4 - Fits 5125	SCR25-700R4
Insert for Powerglide - Fits 5120	SCR20-PGL
Insert for Ford C4 - Fits 5120	SCR20-C4
Insert for Ford C6 - Fits 5125	SCR25-C6

### Ford 9" Rear End Case

The 9" Third Member securely bolts into the base of the container, the lid is then bolted into place to provide a safe and dust free storage container. It is durable enough to ship your expensive third members on common carrier or store your spares in your race trailer.

Ford 9" Rear End Case  
SCR5199  
Bottom Only for Ford 9"  
Rear End Case  
SCR5199B



### Holley Carburettor Case

Designed around the Holley 4150 series carburettor with ample room to clear most air cleaner studs. The carburettor secures to the base with bolts or studs, bolt the lid into place, you then have a completely protected unit that is ready to ship or store. The base can also be used as a handy stand for working on the carburettor.

Holley Carburettor Case  
SCR4150

**P-Ayr**

### Replica Plastic Engines & Accessories

The question is often asked of us, "Who would want a plastic replica engine when you can get the real thing?" We are only too glad to list the many advantages of our lightweight replicas to those who inquire, and remind them that it's not always easy to get "the real thing". We are pleased that many street rod and race car fabricators, performance retailers, and even major auto manufacturers themselves have found a myriad of uses for our products. Massive range available with over 150 part numbers please check online for full range and contact Rocket for more information.



Small Block Chevrolet Intake  
Manifold 4 BBL  
P-AYR2023

4150 Carburettor  
P-AYR1010



SB Chev Long Block with  
non-removable heads  
P-AYR2020

Small Block Chevrolet  
Short Block  
P-AYR2021



Supercharger Kit  
B/B Chev 6-71 P-AYR9021  
S/B Chev 6-71 P-AYR9020

LS1 Chevrolet Short Block  
P-AYR2052



Big Block Chevy Tall Deck  
Engine Replica 3 Piece  
Long Block  
P-AYR2122

LS1 Chevrolet Short Block  
w/Heads  
P-AYR2046

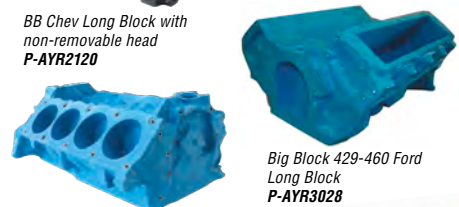


Powerglide Transmission  
P-AYR5023

GM TH400 Transmission  
P-AYR5022



Big Block Chevrolet  
Short Block  
P-AYR2121



BB Chev Long Block with  
non-removable head  
P-AYR2120

Big Block 429-460 Ford  
Long Block  
P-AYR3028



SB Ford Short Block 289-302W  
P-AYR3021

426 Chrysler Hemi Long Block  
W/non-removable heads  
P-AYR4020

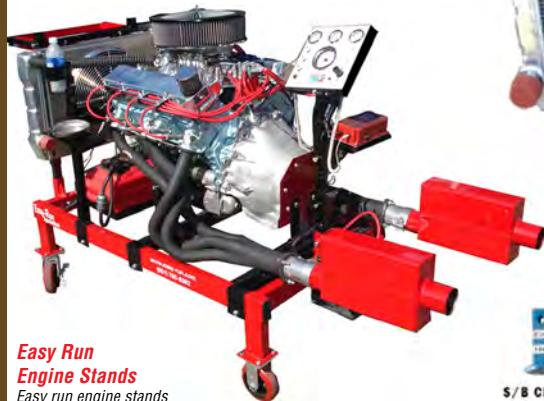
Ford 351W Short Block  
P-AYR3025

426 Chrysler Hemi Long Block with non-removable heads and with Valve Covers  
P-AYR4021

426 Chrysler Hemi Valve Covers  
P-AYR4022



# Easy-Run Engine Test Stands



## Easy Run Engine Stands

Easy run engine stands save you time, aggravation and money by allowing you to run and test engines before you install them or hand them over to the customer. The frame design provides excellent working height, easy loading and extreme stability for engines up to 1000 horsepower.

### Base Series

The Base Series includes the frame only with front and rear crossmembers, engine pedestals, Chev SB & BB and Ford SB engine mounts and 4 polyurethane castor wheels. It includes no electrics, cooling or fuel tank so you can set up your own custom configuration.

Base Series Engine Stand

ER 20004



### Shop Series

The Shop Series includes the same frame as the basic series but includes a fully wired dash panel loaded with 3 gauges, tachometer and control switches. It also includes all battery cables, Ford style starter solenoid, battery and fuel tank trays, fuel tank and wiring for fuel pump and fan.

Shop Series Engine Stand

ER 20003



### Pro Series

The Pro Series includes all the features of the shop series plus: your choice of 2 or 4 port aluminium radiators, 16" electric fan, full fan shroud, coolant recovery system & cap, 3/8" ball valve drain system, tool tray and accessory package kit with stand, universal tray, remote oil filter bracket, timing light holder and frame mount bracket.

Pro Series Engine Stand - 2 Port Radiator

ER 20002

Pro Series Engine Stand - 4 Port Radiator

ER 20001

## Universal Transmission Mount

The Universal Transmission kit allows the engine and transmission to be tested as a unit. Kit includes: mount bracket, T-bar mount, eye bolts and hold down strap.

Universal Transmission Mount  
ERTM 62010



### 4 Port Radiator

The 4 port radiator allows multiple engines such as Chev, Ford and Chrysler to be used by simply switching the heavy duty cooling caps to seal the un-used ports. Easily adapts to a wide range of engines.

4 Port Radiator

ERC 30001



### Engine Mounts

All easy run engine stands include mounts for Chev SB and BB engines and for Ford SB engines. Mounts for other engines are available separately.

Chrysler Small Block & 354-392 Hemi

ERM 40001

Chrysler Big Block 383-440

ERM 40002

Chrysler 426 Hemi

ERM 40003

Ford Big Block FE 352-428

ERM 41001

Ford Flat Head

ERM 41009

### Aluminium Foil Heat Tape

Dead soft aluminium foil tape has a high performance acrylic adhesive system. 3.25 mil thickness with a removable paper liner. Temperature ranges from -37°C to 150°C. Extremely conformable to irregular surfaces. Great for plastic protection from aftermarket pipe installations or anywhere heat is affecting your plastic. MX bikes, ATV's, Street Bikes, UTV's, Snowmobiles etc. Will not work on direct contact of exhaust.

Aluminium Foil Tape 3" Wide x 25 Foot Roll

RTA325

Aluminium Foil Tape 3" Wide x 150 Foot Roll

RTA3150



### ISC Racers Tape

For more than 20 years, ISC Racers Tape has supplied a full range of tapes to the racing industry. From Daytona to Indianapolis everyone uses Racers Tape. With research and testing done on our own race cars, we proudly design and manufacture useful tape products that really work.



### Standard Duty Tape

The original. Multi-purpose colored duct tape. Supplied as 2" wide x 20 foot (50mm x 27m) rolls that tear straight and easy.

Standard Duty Racers Tape - Red

RT2001

Standard Duty Racers Tape - Blue

RT2002

Standard Duty Racers Tape - Yellow

RT2003

Standard Duty Racers Tape - Black

RT2004

Standard Duty Racers Tape - Silver

RT2005

Standard Duty Racers Tape - White

RT2006



### Neon Standard Duty Tape

Multi-purpose NEON colored duct tape. Supplied as 2" wide x 20 foot (50mm x 27m) rolls in 4 brilliant neon colors that tear straight and easy.

Neon Standard Duty Tape - Yellow

RT2003N

Neon Standard Duty Tape - Green

RT2007N

Neon Standard Duty Tape - Orange

RT2008N

Neon Standard Duty Tape - Pink

RT2015N



### Extreme Duty Tape

This highly aggressive and premium heavy-duty duct tape will succeed where other tapes fail. It's Superior tensile strength, clean release, and non-delaminating features make this tape a must have. Supplied as 2" wide x 20 foot (50mm x 27m) rolls.

Extreme Duty Racers Tape - Red

RT4001

Extreme Duty Racers Tape - Black

RT4004

Extreme Duty Racers Tape - Silver

RT4005



### Checkerboard Tape

Checkerboard tape is a great item for all racers and their fans. Mostly used for decoration and to gain attention to all areas. It is a vinyl tape laminated with mylar and comes with a liner. 2" wide x 45 foot (50mm x 13m) rolls.

Black & White Checkerboard Tape

RT5001

Black & White Angled Checkerboard Tape

RT5011



### Non-Skid Tape

Non-Skid is the easy way to prevent slipping and falling with it's instant, self adhesive, and anti-slip safety surface.

This heavy-duty long lasting material is defiant to all weather conditions and will endure temperature extremes of -40° to 105° C. Use on trailer ramps, stairs or walkways, dock areas, brake and clutch pedals, entrances, and of course steps. Non-Skid is sparkle black or clear and is available in rolls of 2"x10", 3"x10" and 4"x10"

Non Skid Tape 2" Wide x 10 Foot Roll - Black

RT8014

Non Skid Tape 3" Wide x 10 Foot Roll - Black

RT8015

Non Skid Tape 4" Wide x 10 Foot Roll - Black

RT8016



### Surface Guard Tape

Formerly referred to as helicopter/leading edge tape.

Surface Guard Tape is an extremely tough, clear, conformable polyurethane tape. This tape provides excellent paint protection from punctures, tearing, abrasion, erosion, ultra violet light, temperature extremes and automotive solvents and will not yellow over time. Be sure to take note that our Surface Guard Tape is made of Polyurethane Material not PVC or Vinyl. These other types cannot, and will not, take the abuse that polyurethane will. Applications for surface protection tape are endless. From race cars to passenger cars and trailers, motorcycles, karting, streetrods, boats, semis, tractors, RV's and all in between. Anywhere a surface, unpainted or painted, that is prone to scratching, chipping or weathering, ISC's Surface Guard Tape can do the job.

Surface Guard Tape 4" x 60 foot Roll

RTHT4614

Surface Guard Tape 8" x 60 foot Roll

RTHT8614



## PIT & TRAILER ACCESSORIES

### 6 Bin Vertical Storage Rack

Designed to keep aerosol cans nearby, at the ready.

Wall mounted. Ideal for use in garage, shop or trailer. Also perfect for holding cold beverages. .090 tig welded aluminium with fully enclosed top and bottom.

30 1/4"H x 4"W x 5 1/4"D

Part # PIT-V98



### Aerosol Can Shelf

This shelf is designed to store 8 aerosol spray cans. Keep cans organized and close at hand.

Dimensions: 21.5" x 2.75" x 546 (546 x 70mm)

8 Aerosol Can Shelf PIT-100



### 10 Container Shelf

This shelf is large enough to store a variety of spray bottles all in one spot for easy access.

Dimensions: 24"W x 5"D (610 x 127mm)

10 Container Shelf PIT-112



### 6 & 12 Quart Oil Shelves

These shelves organize and store oil while looking great in a garage or shop. Shelves fit anywhere for keeping oil handy.

Designed to hold 1 quart oil containers. 6 Quart dimensions: 15"W x 5.5"D (381 x 140mm).

12 Quart dimensions

30"W x 5.5"D (762 x 140mm).

6 Quart Oil Shelf PIT-309

12 Quart Oil Shelf PIT-311





### 3 & 4 Gallon Oil Shelves

These shelves organize and store oil while looking great in a garage or shop.

Designed to hold 1 gallon oil containers. 3 Gal. dimensions: 14"W x 8"D (356mm x 203mm).

4 Gal. Dimensions: 18.5"W x 8"D (470 x 203mm).

**3 Gallon Oil Shelf PIT-316**

**4 Gallon Oil Shelf PIT-317**



### 2 & 3 Gallon Profile Oil Shelves

These shelves store oil in a professional, clean manner. Designed especially to fit on a bench or mount on a wall.

The space saving profile allows for minimum protrusion. Designed to hold 1 gallon oil containers.

2 Gal. dimensions: 17"W x 4.25"D (432 x 108mm).

3 Gal. Dimensions: 25.5"W x 4.25"D (648 x 108mm).

**3 Gallon Profile Oil Shelf PIT-416**



### Gear Oil Shelf

This shelf is designed to store 6 containers of gear oil. Avoid the mess by keeping your lubes organized.

Dimensions: 21.25"W x 5"H x 3.5"D (540 x 127 x 89mm).

**Gear Oil Shelf PIT-105**



### Universal Shelf with Towel

This shelf is designed for cleaning and detail wherever it is needed. It holds paper towels and all purpose bottles.

Dimensions: 10.5"H x 13.5"W x 5.75"D (267 x 343 x 146mm).

**Universal Shelf with Towel PIT-362**



### Universal Mega Storage Shelf

This monster shelf can hold all of your bulky items and equipment in your trailer. Shelf can be the "catch all" of your trailer or garage space. Large dimensions allow a variety of options to keep you organized and on the go.

Dimensions: 48"W x 4"H x 8.5"D (1220 x 102 x 216mm).

**Universal Mega Storage Shelf PIT-104**



### All Purpose Area Shelf

This shelf is functional above work benches, work stations, etc. Keep supplies close at hand for convenience. Large enough to hold an assortment of oil quarts, pump sprays, aerosol cans, and more. The hole punches are ideal for holding various tools.

Dimensions: 30"W x 4"H x 4" Shelf Depth with 6" Outer Depth (762 x 102 x 102mm).

**All Purpose Area Shelf PIT-102**



### Trailer Cabinet

Features on this best selling trailer cabinet include: Fold down table which is great for holding a weather station, tools, small parts, etc. Dual paper towel holder and three shelves for storage. A locking pin secures the folding table in an upright position during transport. The cabinet is fabricated from .090 aluminium for maximum durability. All joints are heli-arc welded for extra strength.

Dimensions: 25"W x 30"H x 5.5"D (635 x 762 x 140mm).

**Trailer Cabinet PIT-320**

### PIT PAL Catalogue Rack

Displays catalogs at shops, races or tradeshows. Featuring a lexan covered header to display the cover, with a tray to fill full of catalogs.

**PIT-495T**



### PIT PAL Trailer Bumper Door

Prevents damage to the trailer door when lowered to the ground.

Dimensions: 7-3/4" x 2" x 2-7/16"

**PIT-703**



### PIT PAL Scuff Edge Hatchet Tie Down

Rated at 10,000lbs, high tech super web fibre makes it stronger and cut resistant with a weather protection coating.

**PIT-500C10**

### PIT PAL Door Grabber

These latches work automatically, keeping trailer doors from swinging shut. Featuring a solid rubber socket and aluminium plunger.

Dimensions: Extra Long 3-1/2"  
Long 2-1/2"  
Short 1-1/2"

**Extra Long Door Grabber PIT-DH42XL**

**Long Door Grabber PIT-DH42L**

**Short Door Grabber PIT-DH42S**



### PIT PAL Telescoping Kart Tyre Rack

2 Tier kart tyre rack hold 11" tyres securely while traveling, powder coated and zinc plated for protection. Telescopes from 32" to 48"

Dimensions: 28" x 13"

**PIT-388**



### PIT PAL Bleeder Bottle Shelf

Contains space for 2 bottles of brake fluid, and two bleeder overflow bottles. Designed to keep your brake gear easily accessible between races, for a quick service at the track.

Dimensions: 5" H x 13" W x 4.75" D

**PIT-106**



### PIT PAL Bleeder Bottle

Catches flowing fluid from the bleeder nipple on brake calipers. Making this usually dirty job, mess free.

**PIT-BR8B**



### PIT PAL Ford Engine Stand

Strong 1" x 1" steel tubing stands are individually fitted for a perfect fit.

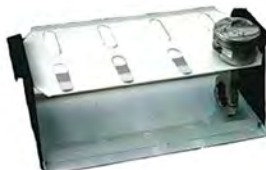
**PIT-161**



### PIT PAL Universal 3 Shelf Cabinet With Towel Rack

This cabinet holds 4 aerosol cans, paper towels, all purpose bottles and latex gloves. A great product for the garage shop or trailer. Dimensions: 30" H x 13-1/2" W x 6-1/2" D

**PIT-364**



### PIT PAL Piston & Rod Assembly Rack

Keep your piston and rod assemblies clean and organised. Sturdy side handles, and flexless design. Lipped bottom tray catches all bolts, tools etc. Can be used for small or large v8's.

**PIT-383**

### PIT PAL Dominator Ring - Suit Tool Tray

Additional ring for use with tool trays that sit on top of the carburettor(s) while working.

**PIT-119**



### PIT PAL Oil Drain Tray

Featuring a carry handle, lightweight aluminium construction, filter drain tray and pour spout. Dimensions: 15" x 2-1/2" x 15"

**PIT-129-0**



### PIT PAL Horizontal Gear Case Rack

Heavy duty aluminium construction, designed to hold 12 Q/C gear cases.

Dimensions: 20-1/2" x 22" x 7"

**PIT-143**



### PIT PAL Engine Repair Pit Table

Easily slips under frame rails and over radiator when the car is on jacks, so that it can be closer to the engine / carburettor. Height is adjustable 35-1/4" to 41".

**PIT-153**



### PIT PAL Large Aluminium Work Table

The strongest in the industry, weighing only 65lbs featuring tubular steel locking legs that fold flat in storage and aluminium hat channel bracing.

Dimensions: 72" x 31" x 31"

**PIT-155**

### PIT PAL Chev Engine Stand

Strong 1" x 1" steel tube stands are fitted to specific engine blocks.

**PIT-160**

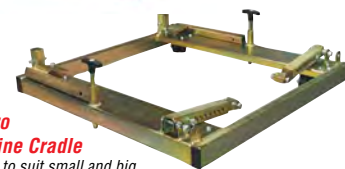


### PIT PAL Pro Stand Engine Cradle

Recommended to suit small and big block Chevs with engine plates, but can be modified to suit other applications. Heavy duty constructions, with dual wheel castors. Designed to fit motor with all accessories mounted. Collapsible for storage.

Dimensions: 28" x 7.5" x 27-1/4"

**PIT-162**



### PIT PAL Deluxe Kart Work Top

Stay organised while you work on your kart. Slot in at rear of tray provides infinite adjustments for stability on any kart. Includes tool rack and 10" magnet strip.

**PIT-165**





## PIT PAL Jerry Bickel EZ-Lift Storage Pack

Suitable for Jerry Bickel jacks only, conveniently stores them in the pouch to save on space.

Dimensions:  
Front Pouch  
22" x 14.5" x 4"  
Rear Pouch  
29" x 17.5" x 4"  
**PIT-196**



## PIT PAL Engine Sling

Picking up on the exhaust port studs, it allows clearance for engines with blowers, or airbox assemblies.

Dimensions: 27-1/2" x 28" x 3"  
**PIT-201**



## PIT PAL Junior Plug Caddy

Holds 48 plugs, designed to keep them organised and in order.

Dimensions:  
10-1/2" x 9" x 8-1/4"  
**PIT-230**



## PIT PAL Pro Plug Caddy

Holds 64 plugs, ready for 4 qualifying, and 4 elimination rounds.

Keeps them organised and in order for the crew.  
**PIT-231**



## PIT PAL Magnetic Tray

Ideal for holding nuts, bolts and washers to prevent losing them while or dropping the tray while doing engine or chassis work.

**PIT-233**



## PIT PAL Slick Mounts

Telescoping design fits wheels with 7" to 11.5" backspacing. Heavy duty construction, powdercoated black.

Dimensions: 45-3/4" x 6-3/8" x 11.25"  
**PIT-282**

## PIT PAL 6 Quart Oil Shelf

These organise and store 6 quart size oil bottles, for shop or trailer. Dimensions: 15" x 5-1/2"  
**PIT-309**



## PIT PAL Axle Strap

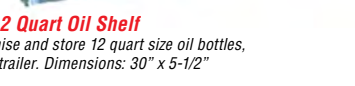
Rated at 10,000lbs this strap is 21" long with a thick protective sleeve.

**PIT-30AS21**



## PIT PAL 12 Quart Oil Shelf

These organise and store 12 quart size oil bottles, for shop or trailer. Dimensions: 30" x 5-1/2"  
**PIT-311**



## PIT PAL Fire Extinguisher Wall Unit

Mount a 5lbs extinguisher in an easy reach place for unexpected emergencies.

Dimensions: 11" x 7-1/2" x 4-3/4"  
**PIT-352**



## PIT PAL Clip On Sink with Towel & Trash Bracket

Make clean up quick and easy with the light weight clip on sink. Easy clip on and off design, and hose quick couples to sink for water supply. Dimensions: 19" x 36" x 20"  
**PIT-368**



## PIT PAL Junior Aerosol Shelf

Holds aerosol cans on the top, and spray bottles on the bottom shelf. Dimensions: 16-1/2" x 16" x 7-1/4"  
**PIT-413**



## PIT PAL Oil Shelf

Designed to carry three 1 gallon oil containers, for the trailer or the shop. Dimensions: 25-1/2" x 4-1/4"  
**PIT-416**

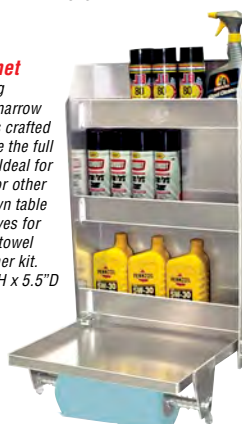


## Deluxe Trailer Cabinet

This Deluxe Trailer Cabinet is specially designed to hold more oil. Wider and deeper shelves to store 20 qts. of oil. Top shelf stores 9 aerosol cans. Holds 2 rolls of paper towels. Fold down work tray. Fabricated from heavy duty aluminium, TIG welded to last a lifetime. Dimensions: 27"W x 32"H x 6.75"D (686 x 813 x 171mm)  
**Deluxe Trailer Cabinet PIT-320A**

## Medium Trailer Cabinet

Designed with space saving dimensions, this compact narrow version of our best seller is crafted to fit in smaller areas where the full sized trailer cabinet won't. Ideal for trailers with double doors or other space limitations. Fold-down table for a work area. Three shelves for storage. Convenient paper towel holder. Locking pin & washer kit. Dimensions: 18.75"L x 30"H x 5.5"D (476 x 762 x 140mm).  
**Medium Trailer Cabinet PIT-323**



## Helmet Shelves

Keep your equipment protected and in one handy spot. Shelf stores helmet, neck brace, gloves and crew ear protectors. Underside garment rack for hanging up to eight uniforms.

1 bay dimensions: 14.25"W x 12"H x 15"D (362 x 305 x 381mm).

2 bay dimensions: 28.50"W x 12"H x 15"D (724 x 305 x 381mm)

**1 Bay Helmet Shelf PIT-330**

**2 Bay Helmet Shelf PIT-331**



## Combo Storage Trailer Cabinet

Designed to provide storage area to save work space, the Combo Storage Cabinet features 3 shelves to store a variety of supplies. The top shelf holds up to 9 aerosol cans. The middle shelf for quarts of oil, and it is also ideal for spray bottles. The bottom shelf for gallon containers, hand cleaners, anti-freeze, windshield solvents and more.

Dimensions: 22"W x 36"H x 8.5"D (559 x 914 x 216mm).

**Combo Storage Trailer Cabinet PIT-325**



## 3 Bay Helmet Shelf

Keep your equipment protected, and all in the same spot. Shelf will store helmets, neck braces, gloves and ear protectors. Underside garment rack, capable of hanging up to eight items.

Dimensions: 42-3/4"W x 12"H x 15"D  
**PIT-332**

## Deluxe Helmet Shelves

A little twist to one of our best sellers. The difference from our Original Helmet Shelf is that we added full storage shelf. We also added a removable front tube for hanging items, such as clothing, tie-downs, gloves and more.



1 bay dimensions: 14"H x 14.25"W x 15"D (356 x 362 x 381mm).

2 bay dimensions: 28.5"W x 12"H x 15"D (724 x 305 x 381mm).

**Deluxe 1 Bay Helmet Shelf PIT-330D**

**Deluxe 2 Bay Helmet Shelf PIT-331D**



## Clip On Trailer Tray

This clip on tray with easy on and off design provides ample table space for portable outside pit use. Large enough for all pit needs, yet stores easily inside trailer. Protective bumpers, support brackets and key punch brackets included.

Dimensions: 38"W x 5.5"H x 17"D (965mm x 140mm x 432mm).

**Clip On Trailer Tray PIT-150**

## Flip Down Tray

This tray provides a handy table when you need some extra counter space. Flip up for quick storage.

Flip down for a handy table when needed.

Dimensions: 30"W x 3"H x 16"D (762 x 76 x 406mm).

**Flip Down Tray PIT-152**



## Fold Down Table

A full size aluminium fold down table that quickly folds and out of the way when you're through working. Folded it protrudes only 4 1/2" (114mm) from the wall. Opened it measures 44" x 18" (1118 x 457mm). Solid, heavy duty 1/8" aluminium fold down work surface. Mounts on 32" centres.

Dimensions: 44"W x 18"D x 4.5"H (1118 x 457 x 114mm)

**Fold Down Table PIT-158**

## Shelf & 5 Gallon Cooler

This shelf securely holds a round 5 gallon (19L) cooler. Mount to a wall or door surface to save work space. Includes cooler.

**Shelf & 5 Gallon Cooler PIT-342**



## Can & Cup Holder

No more searching around for that can of soft drink, beer, or coffee. Keep drinks handy and safe from spills in these can or cup holders. Made to fit cans or large drink cups

**Can & Cup Holder PIT-338**



### Pen & Calculator Holder

A great little gadget for organizing inside the trailer, garage or office. All aluminium tray for holding calculators, small notepads, paper clips, etc. Six round tubes are perfect for holding pens, pencils, highlighters or markers. Dimensions: 5" W x 6" H x 3.5" D (127 x 152 x 89mm).

**Pen & Calculator Holder PIT-304**



### Deluxe Pen & Calculator Holder

We've added a clipboard to our popular Pen & Calculator holder for even more convenience. Great for writing notes, holding time slips, or storing loose papers.

**Deluxe Pen & Calculator Holder PIT-304D**



### Removable Clip Board

Perfect when you need a place to write a quick note, hold a time slip, or store important papers. Unique design includes two Velcro strips which allow clip board to be mounted on roll bars, golf carts, pit bikes, etc. yet removable in seconds. Can also be permanently mounted using our self tapping screw or pop rivets.

**Removable Clip Board PIT-780**



### Racer Log Book

Keep track of important race information with ATI's Racer Log Book. Our log book provides an inexpensive, excellent system to record on-track information as well as maintenance records and expenses, keeping your race operation performing at peak efficiency.

**Racer Log Book**



ATIZ31010

### Magazine/Log Book Pouch

Holds your favourite racing magazines or your log books. Dimensions: 11.25"W x 2.5"D x 12"H (286 x 64 x 305mm).

**Magazine/Log Book Pouch PIT-308**



### Cable Tie Holder

Keep cable ties in one easy to find location. Save work space and hassle of messy piles in cabinets. Dimensions: 6.5"W x 14"H (165 x 356mm).

**Cable Tie Holder**

PIT-RT2



### D-Cell Flashlight Holder

Keep your flashlight at the ready with this sturdy holder. This handy item mounts to tool boxes, trailer walls, anywhere you need a flashlight. Dimensions: 2.75"W x 6.5"H x 3"D (70 x 165 x 76mm).

**D-Cell Flashlight Holder**

PIT-216



### Air Hose Bracket

This hanging bracket neatly stores hoses in one handy spot. Bracket keeps you organized and looks professional in your shop or trailer. Dimensions: 6.5"H x 8"W x 5"D (165 x 203 x 127mm).

**Air Hose Bracket**

PIT-221



### 10lb Nitrous Bottle Racks

These racks keep 10lb nitrous bottles vertical and out of the way. They easily mount to the floor or wall. 2 bay dimensions: 14.75"W x 13"H x 7.25"D (375 x 330 x 184mm). 3 bay dimensions: 22.25"W x 13"H x 7.25"D (565 x 330 x 184mm). 4 bay dimensions: 29.5"W x 13"H x 7.25"D (749 x 330 x 184mm).

**2 Bay 10lb Nitrous Bottle Rack PIT-249**

**3 Bay 10lb Nitrous Bottle Rack PIT-250**

**4 Bay 10lb Nitrous Bottle Rack PIT-251**



### Trailer Fuel Jug Rack

Self-arc welded .090 aluminium rack mounts easily on trailer floor or wall. Holds one round or square fuel jug safely inside your trailer. Dimensions: 11.5"L x 13"H x 12"W (292 x 330 x 305mm).

**Trailer Fuel Jug Rack**

PIT-180



### Fuel Jug Racks

Self-arc welded .090 aluminium racks mount easily on trailer wall. Holds round or square fuel jugs safely inside your trailer. 2 jug dimensions: 23"L x 13"H x 12"W (584 x 330 x 305mm). 3 jug dimensions: 34.5"L x 13"H x 12"W (876 x 330 x 305mm). 4 jug dimensions: 46"L x 13"H x 12"W (1168 x 330 x 305mm).

**2 Fuel Jug Rack**

PIT-181

**3 Fuel Jug Rack**

PIT-182

**4 Fuel Jug Rack**

PIT-183



### Canopy/Shelter Storage System

Store your pop-up tent secure to trailer or garage wall with Pit Pal Products fully adjustable storage system. Brackets are designed to fit 10' x 10' or 10' x 20' tents. System comes with 2 brackets and 1-1/2" wide heavy duty nylon safety belts. Dimensions: 5.75"H x 17"W x 4.25"D (146 x 432 x 108mm).

**Canopy/Shelter Storage System PIT-195**



### Collapsible Chair Holder

Great solution for storing collapsible chairs. Stores up to 3 chairs. Dimensions: 4.125"H x 23.125"W x 7.125"D (105 x 587 x 180mm).

**Collapsible Chair Holder PIT-303**



### Floor Jack Mounts

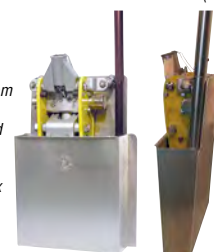
Up until now, one of the most difficult tools to stow away was your floor jack. The Pit Pal floor jack mounts keep jack secure for the long haul. Simply drop jack between rails and position front wheels in the saddles. Dimensions: 2.5"H x 17"W x 2.125"D (64 x 432 x 54mm).

**Floor Jack Mounts PIT-190**

### Jack In The Pouch

A fully enclosed back and bottom wall mounted pouch for racing floor jack. Keeps jack contained while in transit. Made from .090 TIG welded aluminium. Dimensions: 17.5"W x 24.5"H x 5.062"D (445 x 616 x 129mm).

**Jack In The Pouch PIT-194**



### Tie Down Strap Hanger

Keep all your ratchets and bungees off the floor and neat with our multiple strap hangers. Dimensions: 18"W x 3.25"D (457 x 83mm).

**Tie Down Strap Hanger PIT-218**



### Mr. Hook Tie Down Hanger

Features a 17" long multiple strap hanger bar or ratchet tie downs and five individual 2" deep hooks for storing a variety of items. Dimensions: 18" W x 4" H x 3.5" D (457 x 102 x 89mm).

**Mr. Hook Tie Down Hanger**

PIT-213



### Tyre Holder

Tyre cradles snugly in holder for a secure ride. Can be mounted on the floor or wall. Holds a 205/R15 tyre (85" Circumference). Dimensions: 29" x 11.5" x 8.5" (737 x 292 x 216mm).

**Tyre Holder**

PIT-289



### Door Grabbers

These latches work automatically. Keep trailer doors from swinging shut. They feature aluminium male plunger and solid rubber socket.

**Small Door Grabber - 1 1/2" Long PIT-DH42S**

**Large Door Grabber - 2 1/2" Long PIT-DH42L**

**X-Lge Door Grabber - 3 1/2" Long PIT-DH42XL**



### Universal Key Punch Brackets

Universal design bracket that makes anything clip on or off easily. Holds a variety of hard to store trailer and shop equipment.

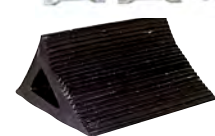
**Universal Key Punch Brackets PIT-241**



### Wheel Chock

Moulded, ribbed, rubber wedge chock with 2 1/2" opening for cable or rope. These chocks are used to help keep your vehicle or trailer from rolling when parked.

**Wheel Chock PIT-DR800**



### Door Horse

Finally a door horse with no assembly required at the track. Just fold out & your ready to go. Features locking side bars for added stability. Lightweight and portable. Dimensions: 39"H x 36"W x 42"D (991 x 914 x 1067mm).

**Door Horse PIT-610**



### Trailer Aid

A fast, safe, and easy way to change a flat. No other jack is needed, simply ride onto the jack and change your tyre. Designed for double axle trailers up to 15,000lbs. (6800kg). 2 colours to chose from: black or yellow.

**Trailer Aid - Yellow PIT-604**

**Trailer Aid - Black PIT-604BLACK**



### Pit Ramps

Allows floor jack to slide under chassis. Keeps front tyres secure while raising rear of car. Helps maintain oil pressure by keeping car level while rear is elevated when warming motor and drive line. Great when pitted in grass or uneven ground. Dimensions: 24"W x 2.75"H x 8"D (610 x 70 x 203mm). Sold as pairs.

**Pit Ramps (Pair) PIT-280**



### Folding Aluminium Loading Ramp

Features heavy duty design 1,000 lbs. (455kg) distributed load capacity per ramp. Features include built in handle, "Sure Grip" positive traction loading surface, "Wheel-guider" edges, and rubberised tailgate protector. Sold as a single ramp.

**Folding Aluminium Loading Ramp Each PIT-DLR7921**



### Pit Ramp Storage Rack

Easy storage for Pit Pal Pit Ramps while in transit. Fasten to wall. Dimensions: 20.75"W x 8.5"H x 3"D (527 x 216 x 76mm).

**Pit Ramp Storage Rack PIT-279**



**Grease Gun Rack HRP-6298**

**Duct Tape Holder HRP-6390**

**Shovel Rack HRP6391**

**Broom Rack**

**Small Broom Rack HRP-6393**

**Large Broom Rack HRP-6392**



Brooms not included





### Fuel Funnel Wall Rack

Triangle Funnel  
Funnel Powder Coated  
D Shaped Funnel  
Funnel Powder Coated

HRP-6260 Triangle  
HRP-6260P  
HRP-6261 D Shaped  
HRP-6261P



### Fuel Jug Racks

4 Jug Rack Painted White.  
HRP-6361

### Paper Towel Rack

.090 Alum Thick Alum  
1" Cross Tube.

Uncoated HRP-6430  
Powder Coated HRP-6430P

### Cord Wall Racks

Small Electrical Cord Wall Rack  
5 1/2" Wide, 4" Deep.

Uncoated HRP-6275  
Powder Coated HRP-6275P

### Large Hose Wall Rack

10" Wide, 5 1/2" Deep.

Uncoated HRP-6280  
Powder Coated HRP-6280P

### Hose Reel Mount & Cover

Mount & .090 Alum Cover  
Both Powder Coated White.

Mount HRP-6292  
Cover HRP-6295



### Tyre Gauge Holder

Mount To Wall .090 Aluminium

Small HRP-6380  
Large HRP-6383



### Ratchet Strap Rack

Keep those ratchet straps organized  
and out of the way when you're not  
using them.

Small Rack 200mm wide HRP-6005SMALL  
Large Rack 450mm wide HRP-6005  
Powder coated HRP-6005P

### Towel Rack

5 1/2 X 5 125 X 13 1/2 Aluminium towel rack  
comes uncoated or powder coated.

Mount to wall

Uncoated HRP-6195  
Powder Coated HRP-6195P  
Towels HRP-6194



### Square Towel Rack

Scott towel rack  
Alum shelf comes uncoated or  
Powder coated. Mounts to wall.

Uncoated HRP-6193  
Powder Coated HRP-6193P  
Towels HRP-6192

### Oil And Aerosol Trays

Aluminium 32" Wide Tray.

3-1/4" Deep Aerosol Bin HRP-6305  
4-1/2" Deep Aerosol Bin HRP-6306



Aluminium 16" Wide Tray.  
3-1/4" Deep Aerosol Bin  
4-1/2" Deep Aerosol Bin

HRP-6300  
HRP-6301



Towel Rack  
HRP-6470

Large  
Lubricant Wall Tray  
HRP-6473



Torch Holder  
Suits Nitrogen Bottles  
HRP-6299



Medium  
Lubricant  
Wall Tray  
HRP-6471

## METAL SIGNS



### FLOWTECH Metal Sign

18" x 7" metal sign with embossed Flowtech logo.  
HO-FL10000FLT



### Vintage Air Anniversary Logo Embossed Sign

Embossed Tin Garage Sign 36" x 14" Black & Gold.  
VA809000-VAM

### SO-CAL Belly Tank Metal Sign

Hand distressed  
vintage tin sign!  
Rectangular. 11.5  
x 17.5.

S0001-93189



Tin Sign - HOT ROD  
Magazine Belly Tank  
Measures 11.5" x 17.5".  
SOC-93210



Tin Sign - HOT ROD  
Magazine Streamliner  
Measures 11.5" x 17.5".  
SOC-93211



Tin Sign - HOT ROD  
Magazine Double  
Threat Coupe  
Measures 11.5" x 17.5".  
SOC-93212



### SO-CAL Logo Oval Metal Sign

The SO-CAL oval (32" w x 13" h) is stamped from aluminium, it's  
great for garages, dens and, they make great gifts.

S0001-93176



Tin Sign -  
Death Takes a  
Ride - ROBERT  
WILLIAMS  
Robert Williams  
exclusive design.  
S0001-93202



SO-CAL  
Metal Sign  
Oil can Piston  
S0001-93188

NOS  
Metal Sign  
24" x 14" NOS  
metal sign with  
embossed logo.  
NOS19327



### WEIAND

### Retro Metal Sign

20" x 20" Weiand Retro metal  
sign with the new embossed logo.  
HO10001WND



### HOLLEY

### Retro Metal Sign

18" x 18" Holley Retro metal  
sign with the new embossed logo.  
HO10003HOL



### NOS Refill Metal Sign

9" x 17" NOS Refill metal sign  
with embossed logo.  
NOS19326